

DI CASA

Febal Casa magazine



2022-2023

febal
casa

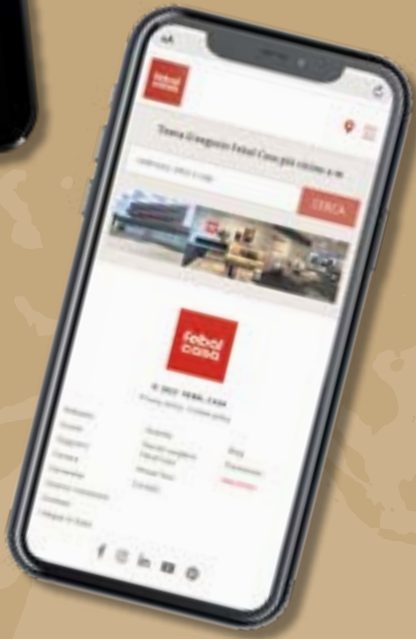
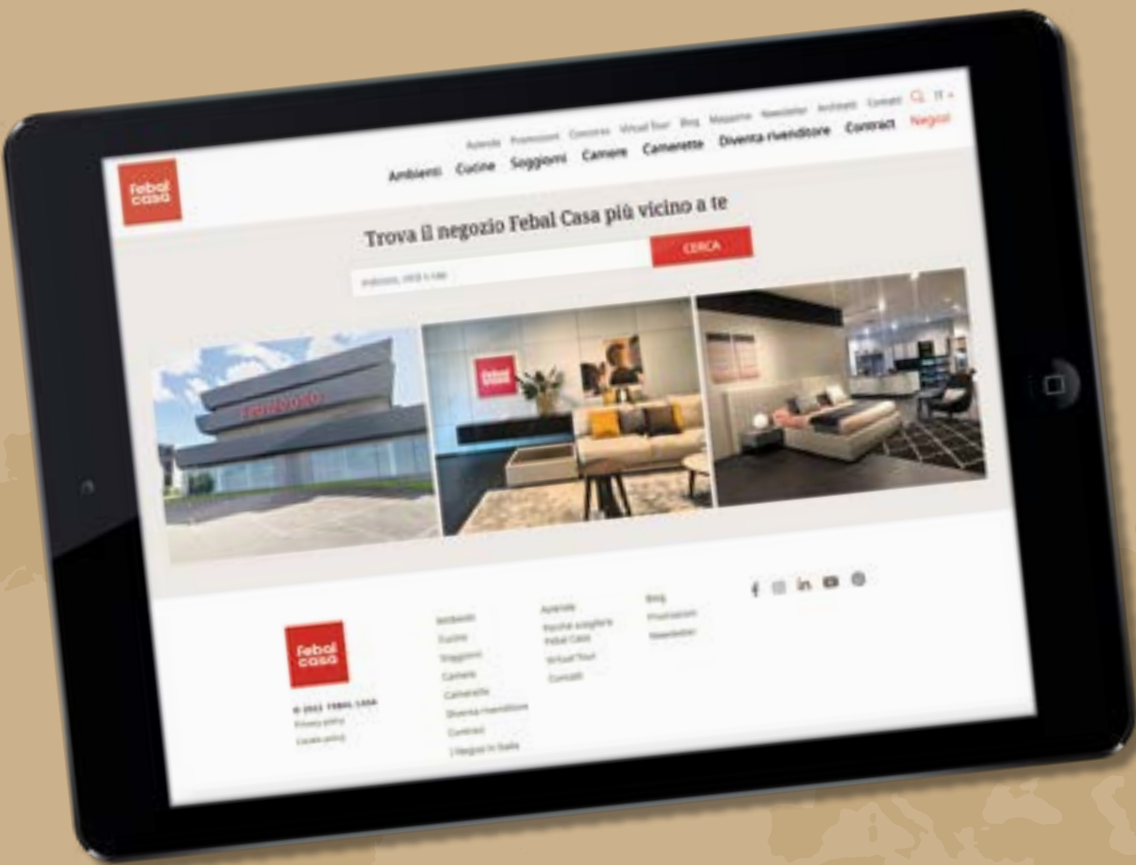
#febalcasa

follow, speak, dream...



www.febalcasa.com

Scan the QR code and discover the Febal Casa store closest to you.





Emanuel Colombini
President of Colombini Group

In recent years, we have responded to important unforeseen challenges which have influenced various aspects of our everyday lives, leaving an indelible mark also on the way we enjoy our homes. Our Brand, whose top priority has always been to make home environments the veritable stars, has strengthened its guidelines consistently and attentively with a view to listening to the emerging new needs, satisfying those of more and more people, their stories and their daily lives. Febal Casa has not only broached the market with a consistent product offering and branded content, but it has also embraced a broader project to look beyond, with shared vision concepts, extending its efforts to protecting and respecting the environmental heritage by converting its production into a virtuous example of a circular economy. We like to talk about Febal Casa as a brand that does not limit its efforts merely to functional designs but that also captures beauty and reinterprets it with international partnerships such as the capsule collection designed by the architect Daniel Libeskind. A brand dedicated to Total Living, which thanks to constant research succeeds in guaranteeing matching freedom of design in all the rooms of the home. Thanks to perfectly matching materials, finishes and furnishing accessories, the brand manages to offer the pleasure of living in a harmonious home that mirrors the choices of its inhabitants, their emotions and personality in space and for long periods of time. Customers who choose Febal Casa know they can rely on the extensive advice of the personal designers available in our stores, making it easier and more fun to furnish their home tastefully.

Visit our virtual Concept Store.

A unique experience to find out more about Febal Casa's Total Living design philosophy.

Scan here and begin your tour



**febal
casa**

FEBAL, DOLCE FEBAL.



Giovanni Battista Vacchi
CEO of Colombini Group

The growth and success of a brand are measured not only through numerical metrics, but also through the emotional relationship that intertwines with its clientele with passion and excellence in making furniture.

This last year, Febal Casa has grown even closer to its customers: more than 30 new stores were opened between 2021 and 2022, for a total of 170 mono-brand stores in the main Italian cities, which will be supplemented by 30 new store openings planned before the end of 2022. The brand can boast an increasingly widespread presence across the country thanks also to the possibility of relying on the support of our expert consultants in furnishing the whole house with a single brand.

The quality and reliability that the market acknowledges in us is rooted in a solid company, part of a Group with strong profit growth: the group ended 2021 on an extremely positive note, achieving most of the targets scheduled for 2024 as part of the 2020-2025 strategic plan ahead of time, outperforming of 30% expectations compared to a market average of 20%.

Always aware of the needs of contemporary life, this success leads us to focus on an international approach where innovation, design and the Febal Casa Total Living philosophy become part and parcel of what we do, to listen, respond and often anticipate.



Paolo Colombo
Art Director of Febal Casa

Febal Casa's new collections were created under the art direction of Paolo Colombo.

This partnership is the result of a shared vision that extends the concept of furniture to a broader view that analyses and translates design projects into genuine lifestyle projects.

"Our projects all begin with an analysis of what the needs are, not limited purely to architectural needs, so that the end result constitutes a specific concrete lifestyle philosophy. The

partnership with Febal Casa is based first and foremost on our shared values: the brand not only produces furniture for a specific area of the home, but it does business according to a vision that embraces the widest concept of lifestyle. Our work thus resulted in a Total Living concept for the home, which we imagine as a space that generates happiness.

Febal Casa is a place where the Brand's philosophy can be felt, but above all where the philosophy of the home's inhabitants is palpable".

This is how Paolo Colombo summed up the values of the entire team who worked with him to create Febal Casa's new collections, which are presented on the following pages.



Index



36
The perfect wine cellar and bar corner

40
The coffee table

44
The wall-mounted bookcase

46
The corner sofa

118
CUCINA. collection
2022-2023



168
GIORNO. collection
2022-2023



08

Libeskind022
Febal Casa's new collection designed by Daniel Libeskind pursues and captures the poetry and strength of light in architecture. A project where three-dimensional surfaces, lights and shadows play on changing shapes and enhance the textured appeal of each piece.



12
Total Living

22
Amid nature and innovation

24
The induction hob

26
The kitchen top

28
The American model

30
Your new kitchen without missing a shot

32
The equipped wall panel



50
The walk-in wardrobe
Neat and tidy, optimised and functional.



188
SOFAS. collection
2022-2023



196
NOTTE. collection
2022-2023

54
Creating a studyrelaxation area in the bedroom

58
How to choose the headboard on your double bed

62
The overhead wardrobe for children's bedrooms

66
Bunk beds

70
Modularity and customisation in the dining room

72
Timeless material, built to last

78
Spacesaving ideas

88
The concept store is all about home

92
New in kitchen

96
New in living room

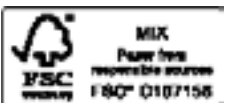
102
New upholstered products

108
New in the bedroom

112
New children's bedroom



212
MOMENTI. collection
2022-2023



” The use of light in architecture has a timeless dimension, irrespective of trends and passing fads. ”

Daniel Libeskind

022

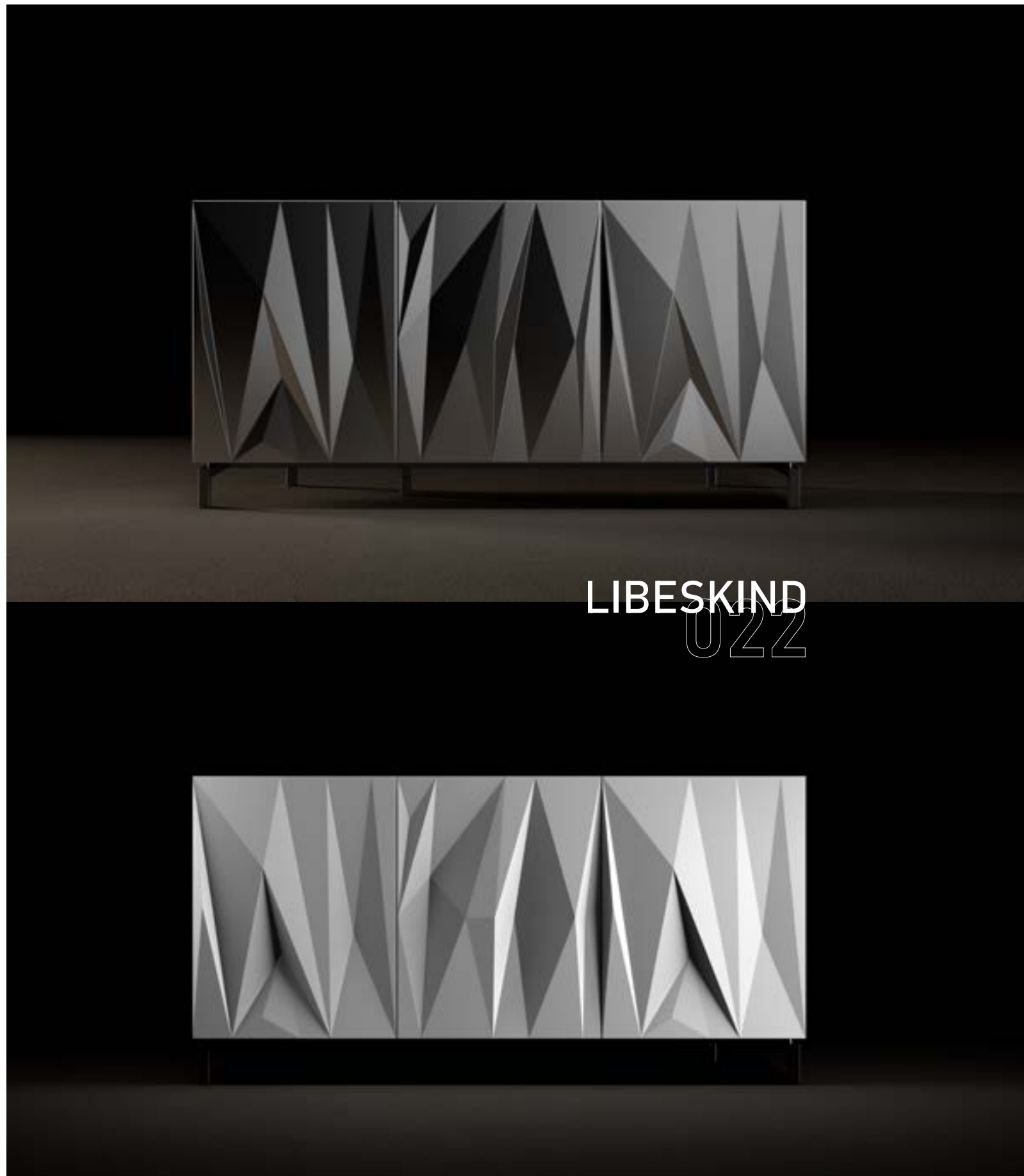
FEBAL CASA'S NEW COLLECTION DESIGNED BY DANIEL LIBESKIND PURSUES AND CAPTURES THE POETRY AND STRENGTH OF LIGHT IN ARCHITECTURE. A PROJECT WHERE THREE-DIMENSIONAL SURFACES, LIGHTS AND SHADOWS PLAY ON CHANGING SHAPES AND ENHANCE THE TEXTURED APPEAL OF EACH PIECE.

Daniel Libeskind drew his inspiration from the historical uses of cabinet-making to protect precious objects. The design is minimal and concurrently complex: it changes constantly depending on how the light strikes it, creating dynamic surfaces that integrate contemporary lifestyles.

The collection includes 3 different types of sideboards: H 75 cm in the version with three or with four wide doors, and H 154 cm in the two-door version.

In addition to being able to customise the sideboard with internal panel or glass shelves and with a matt lacquered or stoneware top, the capsule collection envisages the possibility of inserting an internal drawer unit with an integrated wooden handle for the H 75 cm version and a bar set-up kit for the H 154 cm version with internal drawer and a practical pull-out top.

This collection liaises perfectly with the Febal Casa world, sharing its Total Living philosophy. The doors can in fact be ordered in the matt lacquered colours of the GIORNO collection guaranteeing a style that matches all the available collections.



LIBESKIND
U22

A

Polish-American architect, Daniel Libeskind is an acclaimed international figure on the urban architecture and design scene. Backed by a profound commitment to music, philosophy and literature, his projects aim to create an architecture that is resonant, original and sustainable. Libeskind established his architecture studio in Berlin, Germany, in 1989 after winning the contest for the construction of the Jewish Museum in Berlin. In February 2003, Studio Libeskind moved its headquarters from Berlin to New York City to supervise the masterplan for the redevelopment of the World Trade Center, which is now under way in Lower Manhattan. The Daniel Libeskind studio is involved in the design and construction of a wide range of urban, cultural and commercial projects all over the world, completing buildings ranging from museums and concert halls to conference centres, university buildings, hotels, shopping centres and residential towers. In his capacity as Principal Design Architect, Daniel Libeskind is the point of reference for art and architecture related issues in universities and professional summits. His architecture and ideas have been covered by a large number of articles and exhibitions, influencing the field of architecture and the development of cities and culture.





Total Living

Your style, in any room.

Basically, it is a question of applying consistent styling to give rise to a unique, harmonious project where every room of the home matches all the others, guaranteeing continuity. Trends go out of fashion, but the Total Living concept is devised not to compromise even as time goes by. It revolutionises the design of the home, where the furniture is built to stand the test of time, the finishes are well thought-out and the end result is the ideal bespoke home. It is no longer a necessity

dictated by trends, but a harmonious blend of colours across the various spaces and rooms of the home, designed specifically to satisfy your desires. A complete furniture range that includes elements that lead from one room to another without you almost noticing. Sophisticated refinement in both details and materials, where robustness and quality coexist seamlessly. Benefiting from non-replicable solutions is why the Total Living concept is a must. Indeed, every project is crafted according to the needs and re-

quirements of the intended occupants of the setting. Moreover, Total living furniture adapts to various budget requirements and is devised for your home and your habits, without imposing anything except for a concrete sense of elegance. Colours, inspirations, materials: each component contributes towards creating a delightful and comfortable environment.

The secret behind the Total living concept: balance

When we talk about Total living, we mean a customised project that includes all the furniture for the home: the kitchen, the living room, the master bedroom and children's rooms too. The project leitmotiv is without a doubt the balance achieved with the materials, the colours and the domestic experience.

Modular kitchens, living rooms that meet the needs of sociability and comfort, adding that essential functional touch: bookcases, sideboards, coffee tables, tables, but also sofas to sink into for some well-earned down time. Master bedrooms, wardrobes, children's bedrooms and teenagers' bedrooms. So what do all these rooms have in com-







mon? The choice of finishes that match one another perfectly. This is therefore a philosophy expressed for the home as a whole. The concept of an individual room to furnish no longer exists, but rather a leitmotiv which harmonises every room, to create unique and enveloping atmospheres. The Total Living concept has another important role to

The Total Living concept saves you time

play: that of providing a comprehensive service that allows you to furnish your home in one go and without wasting time. The concept of customised, matching furniture thus teams up with the possibility of saving time and being able to focus more on your passions, with the added benefit of having a single point of reference for the entire home project.



1 WALK-IN WARDROBE

Wardrobes with Barret and Aurora hinged door. Console wardrobe with multi-purpose workstation.

2 BEDROOM

Opus bed, Dido bedside table and Barret and Aurora sliding door wardrobe.

3-4 WARDROBE WITH NICHE

Wardrobe with backlit niche in contrasting colour and storage shelf.



1



2



3

1 WARDROBE

Barret and Aurora sliding door wardrobe.

2 WARDROBE ACCESSORIES

Plus clothes rail, internal drawers and storage accessories.

3 OPUS BED

Bed featuring a tailored design, visible in the rounded corners, stitching and thicknesses.



CUCINA.

ERA

Base units: *Avorio lacquered*

Segno open units: *Avorio*

Tall units and wall units: *Grigio Daytona lacquered*

Top and side panels: *Stone grey laminate*

Shaped groove and Era handle: *Nero*

Plinth: *Grigio Daytona lacquered*

GIORNO.

GIORNO DICHIOTTO SYSTEM

Wall-mounted base units and top: *Stone grey melamine*

Boiserie: *internal panel in Stone grey melamine, external panel in Grigio antracite matt lacquered and shelves in Grigio antracite matt lacquered*

LEAF SIDEBOARD

Door and side panels: *Grigio antracite matt lacquered*

Handle: *Matt nero metal*

Foot: *Carbon grey metal*

BOSTON TABLE

Structure: *Matt nero metal*

Top: *Grigio Londra Fenix*

KICCA CHAIR

Structure: *Wengé-stained beech wood*

Seat and back: *Ritual 0032 Grigio fumo fabric*

NICOLE CHAIR

Structure: *Matt Grigio nero Ral 7021*

Upholstery: *Passirio 0006 Zinc fabric*

SOFAS.

BRIXTON SOFA

Barbat 0014 Grey fabric upholstery

STAR COFFEE TABLES

Grigio daytona matt lacquered

Structure: *Grigio nero matt lacquered*

NEWMAN COFFEE TABLE

Structure: *Eucalypto stained ash wood*

Top: *Stone grey matt stoneware*

NOTTE.

OPUS BED

Headboard and bed frame: *Tape 0415 testa di moro leatherette*

DIDO BEDROOM SET

Structure: *Grigio dorian melamine*

Top and plinth: *Grigio antracite matt lacquered*

Handle: *Carbon grey metal*

WALK-IN WARDROBE

Barret door: *Grigio città matt lacquered*

Aurora door: *Carbon grey frame and Ombra fumé glass*

Console: *Grigio città and Grigio antracite matt lacquered*

Internal structure: *Leather grey melamine*

Equipment: *Plus clothes rail in Carbon grey*

Back panels: *Leather grey melamine*

Side panels: *Grigio città and Carbon grey matt lacquered*

Drawer fronts: *Leather grey melamine*

BARRET/AURORA SLIDING DOOR WARDROBE

Doors: *Leather grey melamine and Carbon grey frame with Specchio fumé glass*

Internal structure: *Leather grey melamine*

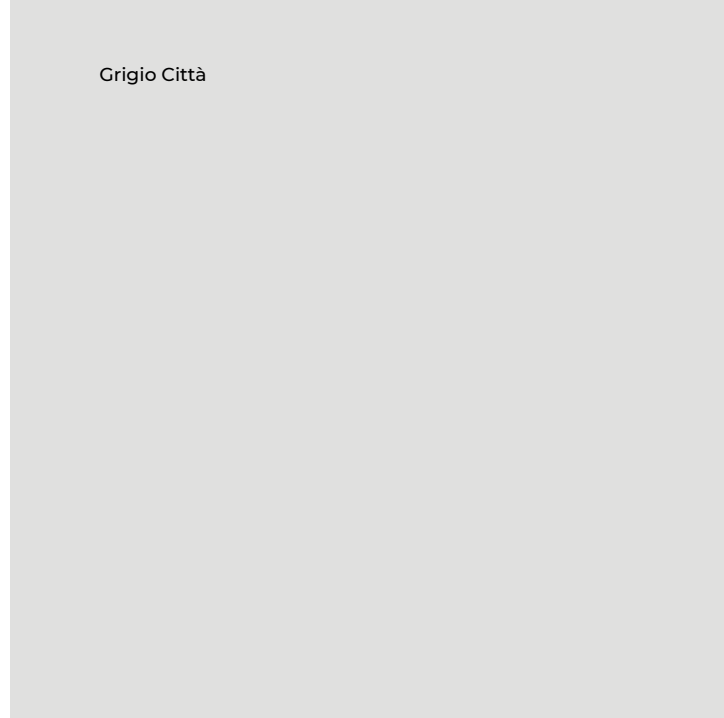
Equipment: *Plus clothes rails, pull-out shoe rack frames and laundry basket in Carbon grey*

Back panels: *Seta argento melamine*

Side panels: *Leather grey melamine*

Drawer fronts: *Seta argento melamine*

Grigio Città



Grigio Dorian



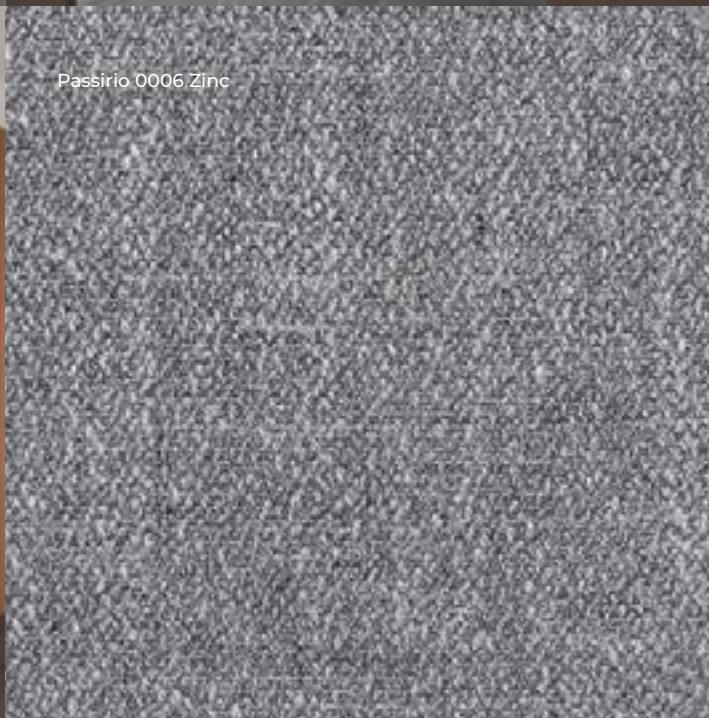
Grigio Daytona



Leather Grey



Passirio 0006 Zinc



Stone Grey





NOCE MELAMINE:

When research into a new finish begins, it is always interesting to understand its origins.

An example of this is the Walnut tree, whose age-old presence in Italy is proven by its discovery in the digs of Pompeii.

This finish is the result of intensive research conducted by the Febal Casa R&D department in order to give rise to a unique and trendy result.

Inspired by a closed-pore wood veneer with a streaked and not a flame figure, it features an ultra matt 3D texture with a warm honey tone; ideal in combination with plain colours for a modern and extremely elegant contrast, or with more neutral hues to enhance its texture.

DESERT MELAMINE AND BASALTO MELAMINE:

Two new colours that give rise to surfaces with an ultra matt result and which are a universal fit for any room, affording a gentle tactile experience and a relaxing feeling to look at. A stylistic imprint that imbues every project with balance, softening the setting for a refined and unusual result.

Amid nature and innovation

Shape and content are both important when it comes to quality. While design and modularity are key features of shape, finishes are key for the appearance of the contents: without them, furniture would be missing its soul.

The induction hob

For a safer lifestyle.

Today, more and more people are choosing induction hobs when designing their new kitchen. Abandoning old-fashioned gas cookers in favour of a modern induction hob translates to a reduction in pollutant emissions, savings on power bills as well as greater peace of mind, having done away with gas.

Despite the fact that the spotlight is firmly on induction hobs, and that great chefs and ordinary people who use them and rave about them non-stop, there are still some doubts and uncertainties about how they work, about what the system requirements are the characteristics that the kitchen needs to have.



„How an induction hob works „

Regardless of the model - which can have a varying level of performance - all induction hobs operate in the same way. Instead of being connected to the gas system, they are supplied by the electricity mains which, when the hob is switched on, supplies a large amount of electricity to the ceramic-covered coil. The electromagnetic field that is generated produces the heat that reaches the pans on the hob itself. This is a simple mechanism, but in some ways, it is delicate and worthy of due attention. The ceramic glass that covers the hob protects the coils and allows the heat to be distributed evenly, speeding up cooking times, and it must always be kept clean. Therefore, immediately wipe off any liquid or food residue, especially if it could scratch

Left, Ego Line kitchen, right, Traccia kitchen. Both configured with an induction hob.

the surface, such as salt or sugar grains. Including the operating mechanism, let's see which pans are suitable for use on an induction hob. You will already have heard that not all of them are appropriate. The reason for this is precisely the operating mode. To generate the electromagnetic effect of heat production, only pans with a ferrous base should be used. You recognise them because they have a cylinder-shaped coil symbol; you can



test them simply by placing a normal magnet on the base. So in practice, forget about non-stick pans (which are unhealthy anyway), terracotta pots, copper pans and generally all cookware without a ferrous base.

„An induction hob with an electric oven „

Then there's the slightly nebulous question of the electrical system required to install an induction hob. People will often tell you that there is no need to make any changes; at most, you may need to increase the power rating on your meter. This is not actually the case.

A 4-burner induction hob needs 7.5 kW to run at full speed (all 4 cooking zones on). This may never happen, or only during big dinners and celebrations, but if you use even just two cooking zones at the same time, you will need around 3/3.5 kW. Now consider that for a normal household utility, the overall power engaged is 3 kW, with a tolerance of 10 percent. This means that to supply electricity to an apartment, you usually reach 3.3 kW without the fuse blowing.



The kitchen top

A choice not to be underestimated.

Once customers have picked out their kitchen, decided on the style, the colour and the material, the remaining dilemma is which top to choose. Customers always want a hard-wearing top, which is easy to care for and aesthetically perfect. Laminate, steel, quartz... there are so many different materials available on the market and they all have different characteristics that can satisfy all requirements. If you're a trained chef, your ideal kitchen top is made of steel, which stands for professionalism and hygiene, but is susceptible to scratches and limescale. If you've set a limit on your budget, focus on laminate which adapts to all style requirements, allowing you to order a practical and durable work surface.



Laminate is one of the most popular materials in the choice of tops. Economical and offering good value for money, it provides good resistance to knocks and heat (up to 180 °C). Choosing a laminate kitchen top has many advantages: it is non-porous, water-repellent and does not require any particular attention even as regards hygiene. Indeed, all you need to clean a laminate top is a sponge and regular household detergent; aggressive products which could damage it are therefore not necessary. Although it is strong and hard-wearing, this top still needs some attention, such as not slicing directly on the surface to avoid scratching the surface with the blade. On the style front, laminate is a perfect choice because it is available in

“What’s evergreen never goes out of fashion”

different variants: the extensive range of colours is accompanied by a wide variety of effects, from wood to granite, stone and metal.

Left, Era kitchen with Fenix laminate island.

Right, Ego kitchen with brushed Grey Saint Laurent marble.

Below, Okite nero reale top.

Those who want an elegant top often turn to granite, an evergreen with a classic taste that does however have some contraindications. It is a very hard material that is heat and scratch resistant, but it is porous. This means that is a good idea to treat it with water- and oil-repellent products on a regular basis to prevent it from becoming permanently stained. The other sore point is its price. An excellent alternative are composite materials, synthetic resins and mineral dust that perfectly mimic natural stones. They are pleasant to touch, but truly resistant to knocks and scratches. The advantage is that they are perfect for making kitchen tops of any size and joint-free. Obviously they are resistant to high temperatures and can be cleaned simply using a sponge and some mild detergent. Quartz is also an excellent - albeit expensive - alternative to natural stone. It is usually the final choice for those looking for a designer work surface. Quartz is like an investment, a material that is resistant to knocks and to heat (up to 200°C).

It is non-porous, does not absorb water, and is resistant even to coffee and wine stains. All you need is soap and water to wipe off any stains from the surface immediately.



While the length of a worktop varies according to the needs and especially according to the space available, its thickness is a question of personal taste and material of choice. The choice of kitchen top thickness usually varies between 3 standard sizes - 20 mm, 30 mm and 40 mm - and the new 12 mm size. Usually, those who choose a modern kitchen prefer a top with a minimal thickness, while those who prefer a classic kitchen opt for the thicker top version.

The American model

The new way of conceiving the kitchen.



The American kitchen, with a huge island in the middle, where the household's every moment of sociability takes place, is also proving very successful in Italy.

The appeal of large kitchens stems from a wealth of functional elements and a layout that invites sharing, where welcoming friends without formality is a joy. American-style kitchens are so beautiful, elegant and welcoming that they become the favourite part of a home, a place to gather at any time of the day.



In Hollywood films, American kitchens make us dream so much that they are the only room to truly play the starring role of movie scenes. While they always occupy large spaces in fiction, they can in reality be designed for any environment. Sometimes the central island is replaced by a peninsula, which once distinguished most of the original American kitchens. The peninsula, today just like back then, is used to connect the operational part of the kitchen to the dining area or, as is the case in contemporary homes, to create a point of union between the kitchen and the living room.

The American model offers advantages even in compact rooms. By structuring the island as a block that performs various functions, much of the perimeter space can be left free for doors, windows and other furniture that complete the kitchen. When considering style, some people may mistakenly be led to close off American kitchens within rigid borders, leaving little room for change. In actual fact, the style of this type of kitchen has many variants. They can have a minimal look or they can be distinguished by the warmth of a wood finish, which alone brings to mind pure country settings but, when combined with metal finishes, they interpret the industrial chic style that is right

New Class kitchen with Grigio Daytona matt lacquered base units, tall units and wall units in Grigio Città matt lacquered, back panel and top in Neolith Mont Blanc.



on-trend. Moreover, they can also make room for details and decorations to highlight a more romantic or vintage style, but they can also light up with colour and bring to mind iconic pop suggestions. There are no limits when it comes to materials or colours when you want to furnish your home with a stylish kitchen because the real element that distinguishes this setting is sociability.

“Febal Casa’s new Class kitchen best interprets the needs of American kitchens: thanks to a higher structure, it expands space where there isn’t any, allowing you to have an extra compartment and more storage space. The distinguishing feature of this model is its frame door which is embellished with exclusive processing along the frame and combines a reference to tradition with a modern international taste”



Your new kitchen without missing a shot

How best to choose your finishes depending on the floor.



When choosing the colour of their new kitchen, customers often have a thousand doubts. Which is the most complicated one to tackle? Deciding how to match the kitchen with the floor. In actual fact, it is not that difficult; following a few simple rules should be enough. If the existing floor is pale in colour, you will have no problem finding the right colour combination between the kitchen and the floor. Since it is a *passe-partout* colour, you could range between styles and bright eye-catching shades and you will do no wrong. The versatility of a pale-coloured floor can also withstand the hues of a dark kitchen thanks to the contrast it offers, perfect for lighting the room and lightening the impact of the dark colour.



An evergreen option is to use tone-on-tone: choosing a neutral finish for the kitchen on a white floor is always a safe bet because it allows you to create an elegant and timeless setting. If you are concerned that uniformity could make the room too cold, just choose the finishes and tops

“*The ideal colour for a kitchen with a beige or grey floor*”

carefully. Materials such as stone, marble and wood add character and are therefore perfect for worktops, wall panels and tops that brighten up a white kitchen on a white floor with some colour.

After white, the most popular colours are shades of grey and beige. A grey floor is perfect for any kitchen, whether modern or classic, colourful or neutral. The only combination to be careful about is with dark finishes because the room could prove dark and uninviting: it works well, how-

Left, Traccia kitchen in Bianco Neve matt lacquered finish and top in Emperador brown.

Right, Modula kitchen with Cachemire matt lacquered finish and island in Fossil Wood finish.

ever, if there are large windows and huge white walls. On a grey floor, the perfect match is a wooden kitchen that brings to mind industrial atmospheres. As usual, the secret to perfect, smooth results is to incorporate the colour of the floor in the top and back panel.

Colour combinations with beige floors do not differ much from the rules that apply to white floors: since beige is a neutral hue, it goes well with most colours. A beige kitchen on beige floor creates an enveloping atmosphere with a soft light, and allows you to play with your imagination if you want to brighten up the furniture with decorative and design elements.



“*The colour for a kitchen with a wooden floor*”

When considering the colour combination between a kitchen and a beige floor, a popular solution is to use stone-look tiles or parquet floors, regardless of whether it is true or a replica. Choosing a kitchen to match a wooden floor requires a little more attention.

Parquet floors, which alone make the room warm and welcoming, go very well with white or another neutral or pale hue. Something a little more complicated, however, is finding a way to match a wood finish kitchen with a wooden floor: combining different woods is a risk and doing it with the same type of wood could create a mountain chalet look. A better solution would be to use wood only for the top and for some of the kitchen wall units, so as to create a pleasant break from the floor.



Endless configurable solutions.



Furnishing a home while optimising space in an optimal way requires in-depth research into the solutions to be implemented. There are some very different furnishing possibilities; simply identify the one most suitable for your home and your personal taste.

The living room is usually the space in a home where free rein can most be given to the imagination. All you need is a sofa, a coffee table, and an attractive wall-mounted composition to create just the right atmosphere for the most sociable room in your home.

Modular systems help you create a wall that reflects your specific needs and tastes, both in terms of use and dimensions.

If you enjoy watching films on the sofa, an equipped wall

panel with a TV is a must. If you are more of a book worm, part of or the entire wall can be set up as a bookcase.

If you need open or closed shelving to store your dinner service and glassware, then you might instead opt for a classic dresser.

The modular wall offers the great advantage of being versatile and of being adaptable to any setting, allowing you to choose in detail how to distribute the space. For instance, the composition can be linear and occupy an entire side of the room, or it can be a corner configuration. The modular elements can also be adapted to different heights, so you can create the desired composition inside a niche, under a flight of stairs or in an attic.



The Lake wall unit in Eucalipto chiaro veneer recalls the Linea shelves in the same finish.

Quarantacinque wall-mounted composition with Cappuccino matt lacquered base units and Cachemire lacquered wall units.

The equipped wall panel



corner in which to work while benefiting from some privacy. On the other hand, the Diciotto system is another valid alternative which, thanks to its extensive modularity, creates ever-different compositions best to interpret any lifestyle. To customise the configuration, customers can also play around and include the boiserie which, with contrasting or tone-on-tone panels and the inclusion of an LED light, can generate welcoming atmospheres and a strong visual impact. Last but by no means least, the Quarantacinque living room system characterised by modern and elegant silhouettes is defined by the particular 45° bevel processing on the door and structure that creates unique volumes in a skilful matt or glossy lacquered finish.

Our modular wall solutions

Accommodating the needs of families by creating designer solutions that embrace the functionality of elements has always been a distinguishing feature of Febal Casa furniture.

A striking example can be seen in the Trenta bookcase which, thanks to infinite design possibilities, meets a host of different domestic and stylistic requirements. Indeed, Trenta can be customised with multiple elements, such as doors, a TV housing compartment and much more. What's more, in an open-plan living room with a kitchen, it can be arranged in the middle of the room to create a partition between the living room and the kitchenette, as well as to carve out a small study



The perfect wine cellar and bar corner

Design solutions to mesmerise your guests.

One of the finest moments when you get home after a day's work is getting to relax in your lounge. Some people lie back on their sofa to read a book or watch TV, while others prefer to have a glass of fine wine or sip a cocktail in peace. A bar cabinet has now become a must-have item of furniture in modern living rooms, which can also be used when you have guests. Febal Casa's GIORNO collection offers a host of possibilities to customise a cabinet or living room wall with bar accessories or bottle racks. Let's take a look at some ideas which may inspire you.





Deciding where to place your home bar among your items of furniture is not about space. To identify the right place to create this particular area, you only need to understand how you intend to use it. For instance, those who intend to use it to serve liqueurs and nightcaps during after-dinner chatter will prefer to fit it next to their sofa. In this case, there are several options to choose from. Among the sideboards in Febal Casa's GIORNO collection, Aurora is practically perfect: you can store your finest bottles behind its plate glass doors, line up all your Tumblers, Balloons, Highballs, Coupes, Flûte a Chacker, enjoy the practical pull-out tray to serve your guests or place snacks and savoury treats to offer them too.

The Aurora sideboard stands out for its light volumes and its refined style. The combination of Carbon grey metal, which distinguishes the profile of the door, combined with the texture and warmth of



the internal wood finish, creates a stylistic and textured game with a strong impact, making it the perfect pairing of function and style. A further bar cabinet option is the Leaf sideboard which, in the new vertical version, can be set up to contain a veritable home bar. Its understated and modern silhouettes make it the perfect furnishing accessory for settings dedicated to sociability. Unlike Aurora, this model does not feature glass doors but instead panel doors, so that the contents are hidden away inside to surprise guests when the time comes to enjoy an after-dinner liqueur.

However, Febal Casa's solutions relating to wine and home bars don't end here.

In addition to the above-mentioned cabinets, there are some genuine wall-mounted solutions dedicated specifically to this particular function.

For wine lovers, the Diciotto composition with boiserie best expresses its versatility, incorporating the bottle-rack element in your living room so you can have your very own personal wine cellar. The Carbon grey supports are height adjustable to accommodate various types of 0.75 l bottles and they coexist perfectly with slim shelves to create a unique design configuration.



With Diciotto, you can also combine the world of wine with cocktails, combining the bottle-rack element from the Dice boiserie. This wall unit can be fitted with a mirrored based and back panel, making it perfect for use as a home bar. Its characteristics mean it can be used as an independent storage unit, which can be customised with glass shelves and built-in LED light



that enhances its style and makes it a precious treasure chest and a perfect storage unit. Another wall-mounted solution that can be equipped with the bottle-rack element is the Trenta system, designed to be a veritable multi-purpose bookcase in the middle of your living room.

The coffee table



The design piece that plays the starring role of the lounge.



There are endless models of coffee tables but before choosing the material, colour and shape, you need to consider the available space and the style your living room furniture. The best coffee tables for the living room are those that not only perfectly match the rest of the furniture, but also emphasise its elegance, bringing that extra touch of character that completes the design of the room. So, before you decide which coffee table to buy, you must first choose the armchairs and the sofa next to which it will be stand. While there are no shape and size obligations to abide by, apart from those dictated by personal taste, there is one constraint concerning height. A coffee table sitting in the centre of the conversation

Top left, living room composition with Star oval coffee tables.

Top right, Newman coffee table at armrest height.



area, in other words in front of the sofa or armchair, should never be higher than the seat itself. Indeed, the ideal solution would be to pick a coffee table that is 2 or 3 centimetres lower.

As for occasional tables designed to be placed beside the seating, then it is a good idea for these to be higher than the coffee table. but without exceeding the height of the armrests on the armchair or on the sofa standing next to it, so as to facilitate the fluid movement of the arm when something needs to be taken from or laid onto it.

The best thing about lounge coffee tables is that, despite their contained shapes, they are suitable for use in so many different interior décor styles, with an array of different materials, colours and geometric shapes. Sometimes you can pick coffee tables that are not even actual tables. For example, you can place a pouf, a footrest or even designer stools next to a sofa. However, you need to be careful what you place on them, as mess and dust are the number one enemies to fight. Round, square or featuring fancy geometric shapes, coffee tables can be positioned stand-alone or in a dynamic composition. In a modern living room, a coffee table with oval silhouettes, such as Star by Febal Casa, makes everything look neat and tidy in front of the sofa without taking up too much space.

Whereas a square shaped coffee table, such as Dialogo, in Eucalipto veneer, allows you to create different compositions in the middle of the conversation area of a large lounge. But you can also use it to create the joint of a corner sofa arrangement or for a modern break to a linear layout and thus add rhythm to the living room. There are also coffee tables with irregular geometries that look like genuine works of art, as in the case of Materico: with its outlined shapes and glossy lacquered top, it sublimates its decorative function becoming the key item of furniture of the living room.





The wall-mounted bookcase

The practical, attractive choice.



Every passionate reader knows that the time always comes to organise your books. When the tomes pile up, you need to find a system to sort them, preventing them from stacking up haphazardly on shelves and surfaces around your home. The wall-mounted bookcase is the best way to keep all your books in order, to separate them according to topics, authors, titles yet to be read and books you want to re-read. You can also arrange your tomes by colour and add a very pleasant and modern chromatic touch to the room. Wall-mounted bookcases give you so many possibilities to arrange your personal reads or those of all the members of your family. So let's look at how to furnish a wall, find the right position, choose the style and colour as well as many other useful tips.

The Trenta bookcase features an Eucalipto melamine structure, Visone matt lacquered back panels, Aurora doors with a Carbon grey frame and Trasparente fumé glass.

The space required for a wall-mounted bookcase
 When you have a lot of books, covering the entire wall of a room with a wall-mounted bookcase is the best choice: by exploiting all the available height, you optimise the space and create a functional wall that gives the room a welcoming atmosphere. If you live in a small apartment or want to furnish a studio flat, then you won't have an entire wall free to use as a bookcase. The good news is that you don't need one: in the living room, in the bedroom as well as in the corridors, a wall-mounted bookcase is a charming and useful piece of furniture that enhances any space. Don't underestimate the potential of small settings: the entrance hall, the staircase and even wall niches can also house a useful bespoke bookcase. In the living room, however, particular attention is paid to the style of the existing furniture, so it is better to invest in a robust designer bookcase that provides both style and functionality.



Bespoke bookcases
 Now that homes set aside less space for the sleeping quarters, their inhabitants usually make do with a small bookcase to store their current reads in the bedroom. The living room and corridor, on the other hand, offer plenty of space to develop solutions with various capacities, perhaps even with a practical built-in desktop. If your living room is an open-plan setting, then why not choose a bookcase that also serves as a partition between two rooms. The same applies if you live in a studio apartment. The configuration of the wall-mounted bookcase should be studied carefully, also depending on the types of books you have. Pocket book collections have a very different size from art volumes, for instance. It is better to keep this in mind and perhaps consider ordering various sized shelves as well. Think about the colour too. If you like classic styles, a wood finish is an evergreen choice that will never go out of fashion. But why not be daring and risk a bold nuance too? Especially if you decide to integrate the bookcase into the living room's equipped wall panel, where you can play around with bright colours and geometric shapes, choosing among the lacquered finishes that offer vibrant blue or red hues.

The corner sofa

A configuration that conveys that delightful welcoming feeling.



Corner sofas are the star features of the contemporary living room. They prove popular because they combine style with practicality and are designed to interpret all interior design

styles. The main advantage of a corner sofa is its versatility, combined with the ability to welcome guests in the living room with elegance and without the need to add uncomfortable or improvised seating.

The outline of the classic L-shaped sofa allows customers to furnish the room while focusing on a single, quality furnishing accessory that has the ultimate styling impact. Indeed, unlike a classic sofa, a corner sofa is bulky and makes up the core of the living room. However, you have to choose the type that suits your particular needs. An L-shaped generally has three seats on one side and one or two on the short side that forms the corner. This type of sofa can comfortably seat six people (the corner of the sofa is in fact a seat) which is why it is the perfect choice for large families or when you have guests over.

Another possible corner sofa configuration involves the chaise longue, which provides a straight couch and a chaise longue at a right angle to it. This sofa model is specially designed to allow you to stretch your legs and almost lie down completely, which is ideal to read a book or watch Television in the utmost comfort. Although it is not its main function, the L-shaped sofa with a chaise longue can also provide comfortable seating for several people.

When you choose a modular corner sofa, you have the advantage of being able to compose your corner sofa as you see fit. You can focus on a shape with two equally long sides, on a case-by-case basis moving the corner of the sofa to the left or right, even offering back-facing seats, inserting pouf modules without a backrest that are also suitable to generate chaise longue configurations.

The comfort of reversible sofas is that you don't



have to choose a fixed composition with a left or right corner. What you choose according to your current layout does not constrain you in the future and allows you to change the layout as often as you like. With the modular solutions included in Febal Casa's SOFAS. collection, you can create modern corner sofas that fit in seamlessly with the size of your living room: this versatility is also an advantage when you move home or want to renew the layout of your living room.

As far as the upholstery covers are concerned, the choice is always extensive, both in terms of colours and materials. The fabrics range from cotton to linen, although leather always offers excellent guarantees in terms of fit and durability, with modern eco-leather solutions following not far behind. Usually with fabric upholstery it is advisable to choose completely removable models because they make for easy maintenance and better and more accurate cleaning. In the case of leather or eco-leather, a damp cloth is enough to remove any dust.

When it comes to colours, the choice is obviously personal. The important thing, especially when the decision seems to sway between neutral and bright shades, is always to keep the dimensions in mind: the colour of an impressive corner sofa does not go unnoticed, on the contrary it becomes the central element around which the rest of the living room can then develop.



The walk-in wardrobe

*Neat and tidy,
optimised
and functional.*



Walk-in wardrobe with Carbon grey frame structure equipped with drawer fronts in Grigio acciaio melamine.

The back panels in Seta argento melamine express a tailored style with pale hues.

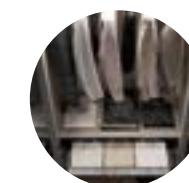


Organising and accessorising the walk-in wardrobe is important because it saves you time in every day. Indeed, sorting all the space helps you optimise the wardrobe and arrange your clothes so that they are always neatly folded and ready to use. The first thing you need to know when deciding on a walk-in wardrobe is whether it will be used by just one person or whether several family members will be sharing it. In this case, it is advisable to separate the wardrobe into different areas, so that each family member has direct access to their own space. Another thing to keep in mind is how much space you will need to store everyone's clothes. To help you do this, start by categorising the garments, so you can precisely define the quantity and type of compartments you need. You can only organise a walk-in wardrobe in an optimal way once you have understood how many coats and long dresses you will need to hang and once you have decided whether to fold up your shirts and blouses in pull-out shelves or hang them next to your trousers and skirts. The same applies to chests of drawers: do you only need them to store your underwear, socks and pyjamas? Or do you prefer internal drawers to sort your T-shirts and sweatshirts, folded like neat and tidy guru Marie Kondo teaches us? With Febal Casa's NOTTE. collection, you can plan the solution most suited to your needs,

creating customised configurations for the internal accessories too.

And when it's time to change over with the season?

Once you have categorised your clothes and where to put them, you will have to repeat the process when it's time to switch to your summer or winter wardrobe. Sorting out your walk-in wardrobe, keeping in mind that you need two seasonal spaces, allows you to evaluate the space needed for the areas you use most frequently and those that you can consider inactive. To make the best use of the wardrobe layout, keep your regular clothes within easy reach and place garments you seldom use on the most awkward shelves to reach such as the ones at the top. In the case of a corner walk-in wardrobe, a great way to take advantage of the corner is to hang all your evening gowns or special occasion dresses there. Above them, you can design a series of shelves where you can store suitcases, wrapped up duvets and other items you will only need again the following season.





Internal accessories

Choosing the internal accessories is a bit like planning the layout of the walk-in wardrobe. Behind the doors - whether these are sliding or hinged - you can apply clothes rails to hang clothes, shelves to stack garments you want to keep within easy reach and drawers to store others. But once the basic elements have been organised, there is a world of accessories to be discovered to keep everything organised and at hand: pull-out baskets, sliding shelves, tie racks and trouser racks, not to mention boxes, sliding shoe racks and laundry baskets. The larger the available space, the easier it will be to organise your walk-in wardrobe to store everything, perfectly neat and tidy, without leaving any garments lying around the home. If you are lucky enough to have a room you can turn into a dressing room, you can also furnish the walk-in wardrobe with a dressing table and a comfortable pouf where you can sit down and apply your make-up and relax with a good book.



Creating a study-relaxation area in the bedroom

Tips for a cosy and welcoming corner.

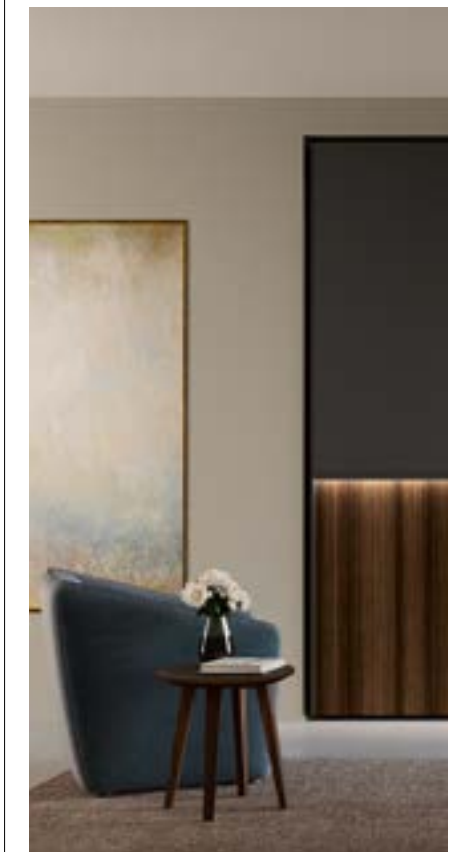
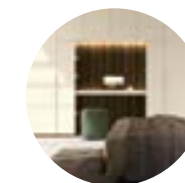


If you need to furnish a study where you can work and relax, remember that making room for a few house plants is ideal. A study conducted in Japan by researchers at Hyogo University scientifically evaluated the effects plants have on anxiety: according to observations on groups of people at work, the researchers found that interrupting work to interact with plants even for just three minutes changes their heart rate parameters (which characterise a state of anxiety). If you feel the need to carve out your own space and are looking for ideas for a quiet study where you can pore over your books, work and relax undisturbed, you only need to take a few steps to make your dream come true. In addition to the first tip about including some house plants, another important factor is the colour of the walls: the shades you should pick are neutral and pastel, like green and sky blue, which regenerate body and mind, fostering a state of calm and concentration. To work with greater peace of mind, place your desk near a window – next to it, never in front of it, or with your back to it – and invest in a comfortable chair that supports your back. If you only need a desk surface to place your PC, your diary and your phone, opt for a slimline solution such as a fold-down desktop or a shelf in your bookcase. Keeping things clean and tidy is essential for relaxation and concentration.

Left, the ConSOLE wardrobe is distinguished by a contrasting compartment fitted with built-in LED lighting, a multi-purpose surface and hidden shelves

Furnishing a bedroom with a study corner

A bookcase is always an excellent ally to furnish a comfortable and relaxing study corner in a bedroom because, with a comfortable chaise longue chair beside it, it transforms any corner into a perfect den to abandon yourself to your thoughts and leave your mind free to wander, with or without a book in hand. A large full-height double-sided bookcase can also become an open unit to divide the room in two and thus allow you to furnish a small study incorporated into the living room, instead of making do with just a relaxation corner.





Ideas for a veritable relaxing study corner

If on the other hand you have more space available, a bookcase remains a great ally because, with a comfortable chaise longue next to it, it can turn the room into a safe haven where you can abandon yourself to your thoughts and leave your mind free to wander. Instead, if you opt for a double-sided bookcase placed in the middle of the room, it can become the designer feature which divides the room in two and provides a study corner incorporated into the bedroom. The elegance and clean-cut appeal of modern style are essential to creating a comfortable setting for you to focus on you. Febal Casa's modular wardrobes blend in seamlessly with any setting, even the smallest, providing elements which when necessary can turn into a desk to work on your PC, making for the perfect home office. The Console wardrobe offers a restyled version of the walk-in wardrobe because it is designed to be utilised at various times of the day. Indeed, the console houses a thick, multi-purpose surface, served by shelves that disappear behind hinged doors and built-in LED lighting, making it ideal for a highly personalised space.

How to choose the headboard on your double bed.

Panel or padded, find out all our tips.



Softcase bed model with headboard and bed frame in Burana 0015 Porcelain fabric.

Not everyone knows that the headboard on a double bed came to be because of a utilitarian need and not due to style reasons. Originally, in fact, the only objective was to protect the mattress from the cold seeping through the wall against which it was placed. Subsequently, it was decorated and has with time assumed different shapes and materials. Today, we consider it to be a genuine designer feature; indeed we can safely state that when we furnish our bedroom, we focus on the headboard first and foremost to find the right style for the home.

The headboard of a double bed is its most visible element because, while the bedstead may often be concealed by blankets and bedspreads, the top of the bed is always exposed to view. Choosing the headboard is therefore essential to create a specific mood for the bedroom furniture.

The panel headboard

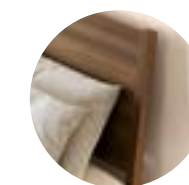
The headboards on contemporary beds follow fashion trends when it comes to colours and materials. Today, beside panel and metal headboards, the presence of fabric-upholstered and padded headboards is also widely accepted. Panel headboards are certainly the most common type because so many different versions are available. It can range from Indian style to Oriental Zen, from Scandinavian to boho, classic

Grigio Antracite glossy lacquered Gala bedside table with Carbon Grey metal legs.



with a little Baroque to contemporary designs with simple yet original silhouettes like the Lisboa bed by Febal Casa.

Whatever the style, the wood finish headboard, like the Nouvelle model, embellishes the bed with timeless elegance and, with built-in LED lighting, it acquires that added note of character that makes the décor of the room even more attractive. And on the practical side, panel heads are unbeatable because all you need is a cloth to wipe them clean without requiring any special maintenance.





The padded headboard

Fabric headboards prove popular because they embrace both classic and modern styles. With generous, smooth padding or with a quilted button pattern, fabric headboards are part of the choice of traditional and refined furniture that fits in with antique furniture as well as with a more contemporary style. For instance, a diagonal-padded or velvet headboard lends the bed a sophisticated, vintage look. Whereas a more linear padded headboard, or one with vertical motifs such as the Softcase Royal headboard or one with a smooth look like the Daiquiri bed are ideal for contemporary bedrooms.



Coloured headboards

Colour plays a key role in making a difference. It can be used to add volume to settings and avoid the feeling of having a bed sitting alone in the room. Coloured headboards made from fabric, leather or eco-leather create depth and dynamism. The choice of colour varies according to taste and also according to the size of the bedroom.

In a room with pale coloured walls, a midnight blue or plum coloured headboard helps to add depth. In a room with a high ceiling, a spacious headboard in warm curry yellow reduces the visual distance from the ceiling.

The overhead wardrobe for children's bedrooms

Every child's dream.



Among the various solutions designed to furnish children's bedrooms, the overhead wardrobe is a functional and fun solution that allows you to customise the room in style. The bed with overhead wardrobe provides space for sleeping and for keeping clothes neat and tidy. Whatever the style of décor, Febal Casa offers solutions for both single and twin bedrooms.



The wardrobe can develop symmetrically and therefore be made up of two tall units at either end. Or you can think of using a single wardrobe tall unit on one side and having a bookcase on the other. There are several customised combinations of wall-mounted modules and floor-standing versions which lighten the look of the wardrobe composition, which could otherwise prove too busy. Instead, if you arrange it this way, the end result is light and attractive, simply perfect for the world of tots and teens.

From a certain age, children no longer feel the need for free space to play on the floor. What really matters is to have somewhere to relax and isolate themselves. This need becomes even more urgent if they need to share this space with a sibling. So in this case, furnishing the bedroom with an overhead wardrobe is an excellent solution to optimise the available space and to separate areas behind each individual door unequivocally. The structure can be developed along a single wall and place the twin beds side-by-side below it, or two overhead wardrobes can instead develop in a mirror image on two opposite walls with the two beds underneath, facing one another.

When the size or architecture of the room prevents you from fitting everything you need in there, you need to make use of the space height-wise. Not everyone likes the idea of sleeping with wall units fitted above their head. In these cases, other solutions that overlap wardrobes, desks, chests of drawers and shelving in a pleasant alternation of geometries are strategic.



Bunk beds

*For double the space
and to make bed time
a fun affair.*



Investing in fun, space-saving solutions can be a practical choice for your child's bedroom. Bunk beds are ideal because children love them - they immediately bring to mind playing and adventure, while parents can rest easy when it comes to safety and space.

If two siblings have to share the room, bunk beds are preferable because this solution leaves the useful surface free to be used for other needs. This way, there is room for other items of furniture, such as a



chest of drawers or a desk, or the recovered space can simply be used as a play area, making the room more airy and welcoming.

Bunk beds are an undeniable feature of style, as well as being a smart solution. Indeed, with bunk beds, the floor surface usually occupied by a second bed can remain free and become a practical play area or a valuable space to fit a desk for use on both sides. Moreover, some bed models are even more functional, incorporating storage drawers, doors or even a pull-out drawer concealing a third bed for guests.

When it comes to children's beds, safety is twice as important. More than looking for tips and tricks on how to make bunk beds safe, it is important that you choose quality structures. You need to check that the slats on the top bunk are sturdy and check that the ladder is solid and well secured to the side. If children sleep fitfully at night, safety rails are essential to make the bunk bed even safer.

Of course, due to the ladder, the classic bunk bed layout means the top bunk is not suitable for a small child. This means that, until the child is 5 or 6 years old and therefore moves independently and safely, you need to avoid the top bunk and make the younger sibling sleep in the bottom bunk. It is certainly also possible to design bunk bed variants devised to be safe even for younger children. Indeed, solutions can be produced with steps which, like miniature flights of stairs with a handrail, climb up into a space protected by doors and storage compartments, integrated in the structure of the bed itself. There are also many original and colourful alternative space-saving solutions.



Modularity and customisation in the dining room

The table that will surprise your guests.



Elegantly designed, the Nives armchair is also extremely welcoming thanks to its padded seat and armrests that provide outstanding comfort levels.

BLISS TABLE AND NIVES ARMCHAIRS

The new sophisticated and minimal Bliss table adapts to any style to be at the heart of moments of sociability. Its sinuous shapes liaise perfectly with the Nives armchair.



The Bliss table is available in various sizes with a fixed rectangular or barrel-shaped top. In both formats an extending version is also provided.



The infinite customisation possibilities offered by this model make it the key element of the dining room around which you can easily invite friends and relatives.

The metal structure, which can be configured in 4 colours, can be combined with a wide range of shapes and work-tops such as melamine, veneered wood, plate glass, superceramic and super-marble to satisfy all needs and adapt to every style of interior décor.

The understated appeal of the structure lends the table elegance and highlights the uniqueness of the tops, which differ both in size and in shape and materials.





Timeless material, built to last

*Two new Neolith® finishes
exclusively for Febal Casa.*

A 100% natural material with extraordinary characteristics which in a thickness of just 4 millimetres contains one of the best selections of raw materials and a revolutionary production process that is extremely high-tech, namely “sintering”. This subjects the natural raw materials to very high pressure and temperatures, giving the material unique physical and mechanical characteristics.



Neolith®
Zaha stone silk



Neolith®
Calatorao silk



Aspen Grey

Extraordinary characteristics

EASY TO DISINFECT

Neolith®, the safest option for your kitchen top.

RESISTANT TO UV RAYS

Since it is 100% natural, its colour does not fade with exposure to the sun, nor to extreme temperatures.

HYGIENIC

It does not release harmful substances. Totally suitable for contact with food.

RESISTANT TO THE FREEZE-THAW CYCLE

Neolith® does not incur any damage when subjected to low temperatures.

SUITABLE FOR HIGH TRANSIT AREAS

Thanks to the hardness of its surface.

LIGHTWEIGHT

The 3 mm-thick slab weighs just 7 kg/m², the 12 mm-thick one weighs 30 kg/m².

RESISTANT TO BENDING

High modulus of rupture. Resistant to heavy loads and high pressures.

100% NATURAL

Resin-free. Does not release any environmentally-harmful substances.

100% RECYCLABLE

Any slab of Neolith® consists of up to 52% recycled raw materials.

RESISTANT TO HIGH TEMPERATURES

It does not burn on contact with fire, nor does it emit smoke or toxic substances.

WATERPROOF

Waterproof and liquid-resistant. With near-zero absorption level.

RESISTANT TO SCRATCHES

The hardness of its surface makes Neolith® immune to scratches and abrasions.

EASY TO CLEAN

Resistant to cleaning chemicals.

Aspen Grey and Mont Blanc are the two finishes which will exclusively clad the Kaleidos model by Febal Casa, creating a concentrate of

style suitable for any type of kitchen. The most technical aspect of Kaleidos can be found in the structure of the aluminium doors, a 100% recyclable green material, which comes together with the Alpine charm of the French-Swiss Alpine slopes, the source of inspiration of the Mont Blanc finish. A tribute to white quartzite, characterised by a neutral hue combined with the white background against which a delicate vein pattern stands out in deep black and oxide, with ochre nuances. Thanks to a special production technique, a relief can be perceived to the touch, which sinks down into the material exactly at the point where the vein patterns lie.

The second Neolith® finish made exclusively for this Special Edition of Kaleidos is Aspen Grey, a frosted grey inspired by natural Aspen stone, supplemented by the addition of micro-elements to lend the surface depth and character, characteristics that bring to mind the typical graphic development of stone cut from the lower slopes of a mountain.

These two exclusive finishes join four standard finishes already in the available range: Calacatta silk, Pietra di luna silk, Zaha stone silk, Calatorao silk.

The Special Edition of Kaleidos also provides greater storage ergonomics: the implementation of the Over structure makes it possible to have an increased height of 6 cm with an 8 cm plinth and another shelf in the base units as an optional internal accessory. The depth of the top increased to 63 cm generates a large operational area.



Neolith® Pietra di luna silk



Neolith® Calacatta silk

AN UNCONVENTIONAL KITCHEN



Space400 Fridge A new dimension of freshness

Whirlpool **Space400** is the space management solution that has revolutionised the built-in appliance market. With its **400 litres in just 70 cm**, **Space400** has set a new standard in the kitchen. Thanks to **Push to open** technology, a simple press is all it takes to quickly open the door and enter the world of perfect preservation.

W11 Oven Outstanding design and performance

W11 is a range designed for refined minimalist kitchens. The beauty of glass blends with the other elements for a stunningly elegant finish. With connectivity and the **6thSenseLive** App, you can find new recipes, organise meals and discover endless possibilities in the kitchen! **SteamSense+** technology, with 100% steam, enhances the taste of food while maintaining the nutritional qualities and vitamin and mineral content of the food.

Induction hob 77 cm A new standard of performance and design

Whirlpool has reinvented the way people cook and experience their kitchens with hobs that combine cutting-edge design with the most advanced technology. The innovative displays, with clear and essential lines, allow intuitive interaction with the **6th SENSE technology** for a perfect mix that offers a unique assisted cooking experience.

Perfect symmetry

The **Space400 refrigerator**, **W11 oven** and **77 cm hob** create a unique suite for elegant cooking and storage performance.



Space-saving ideas



Know how to be organised is a way to make life simple. Especially when you need space-saving ideas for a home that isn't as spacious as you'd like. In these cases, smart solutions become essential, as they make all the available space efficient, so all your belongings are in the right place and within easy reach.

Space-saving ideas in the kitchen



THE KITCHEN WITH AN OVERSIZED STRUCTURE

If you're worried you don't have enough room to store your cookware and crockery, Febal Casa's oversized kitchens are the perfect space-saving idea for you. Usually kitchen base units have a 72 cm high structure that rests on a 12 or 15 cm plinth and are then topped off with a worktop. In these models, on the other hand, the plinth is lowered, the worktop is raised and the cabinet becomes more spacious, offering the added bonus of an extra shelf with respect to the standard. And the beauty of it is that the floor surface occupied does not vary by one centimetre.



A KITCHEN WITH AN OVERSIZED WORKTOP

It might sound like an oxymoron, but in actual fact it's the secret to a larger worktop. The increased depth of Febal Casa's tops means you benefit from a larger work surface. That's not all: this way, you can also store small appliances such as a coffee machine and still have enough room to work.

THE INDUCTION JOB BUILT INTO THE TOP

Another alternative is an innovative solution concerning the hob and the worktop. If you only have a small surface, opt for the traditional two-in-one concept, combine it with the latest in state-of-the-art technology, and you'll have an induction hob built into the top: hard-wearing, functional, durable and also with the perfect style. The advantage is simple: when you aren't cooking, you can use the top as a worktop, and when it's time to do some cooking, switch on the hob and it turns into an induction hob.



Space-saving ideas for the living room



When you live in a small apartment, furnishing a compact living room is almost always a must. The living room is the place in any home where one spends the most time so it is worth choosing every detail carefully in order to make it welcoming and comfortable.

Let's see how to furnish the lounge to create a cosy and perfectly enjoyable setting.



THE TV WALL

One of the secrets to furnishing a small living room is to take care not to overload the room with too much furniture, both in terms of quantity and size. This also applies to the walls. The wall intended to house the TV can become overwhelming if it is fitted a huge, solid piece of furniture. The ideal solution would be to fit it with a composition modulated by blocks and voids, alternating with shelves and a small book-case. This way, the lounge remains neat and tidy and even looks more spacious.

THE SOFA IS THE STAR

The choice of sofa is very important. Our advice is to opt for low models without being tempted by excessive size. Furnishing the living room with a bulky sofa could make it difficult to get past it and make the room look cramped. To add movement to the room, our advice is to detach the sofa from the wall and place it in the middle to create a square space consisting of a sofa, pouf or armchair.

What's more, choosing a storage sofa or pouf could be the right solution for storing all those bulky and less frequently used items such as duvets, blankets and pillows. There are also sofas which, in addition to having a storage compartment, can be converted when necessary into a double bed, which comes in handy to accommodate friends and relatives. Febal Casa's SOFAS. collection includes a wide range of modular models that can be customised and configured to suit all needs.



Space-saving ideas for the master bedroom

Modern homes are built within rather confined spaces. This is why designing space-saving furniture is essential to make the smallest rooms of the home enjoyable, welcoming and functional. In these cases, special layouts and multi-purpose furniture are just one idea to draw inspiration from in order best to organise your master bedroom.

THE OVERHEAD WARDROBE

Choosing space-saving furniture for the bedroom is necessary if you have no intention to compromise on comfort. Learning to overlap volumes is an opportunity you should take to increase and integrate your space.

Among the most popular options, you could try optimising the bed base with a storage compartment, or take advantage of the space provided by the headboard: in this case too, you can carve out an additional storage area. But you could benefit even more if you choose to furnish the wall where your bed is fitted with an overhead wardrobe. The advantage of fitting this structure is immediately visible: all the space above the bed is exploited width-wise and height-wise, creating a capacious and tidy wall-mounted wardrobe.

This system exploits the space that would otherwise be left unused or destined for purely decorative elements. If you wish, you can lighten the overhead storage compartment with open shelving to place books, thus remedying the possible problem of not having any bedside tables. You can also include drawers on either side of the bed to store precious items and other accessories. It may seem like a very impressive style solution, but in fact, by choosing lacquered finishes, playing with the transparency of mirrors and opting for pale colours, you can create an airy, bright and relaxing bedroom. One that is also extremely comfortable and offers plenty of storage space.



Space-saving ideas for the children's bedroom

If you are part of a large family, or if the shared space is rather limited, optimising the available space when furnishing the children's bedrooms becomes an essential requirement. In particular, the children's bedroom can easily become chaotic because - this is a well-known fact - kids always have heaps of "necessary" items. From clothes, to toys, school equipment and sports gear. That's why the room needs to be organised with space-saving furniture.



THE FOLDING BED AND THE SLIDING BED

The bed usually takes up the most space, especially because its size cannot be reduced. An excellent solution could be the Click folding bed, available in both single and bunk versions, because it opens in the evening or if necessary, leaving the area free during the day. For maximum organisation, they also come in versions with a built-in desk.

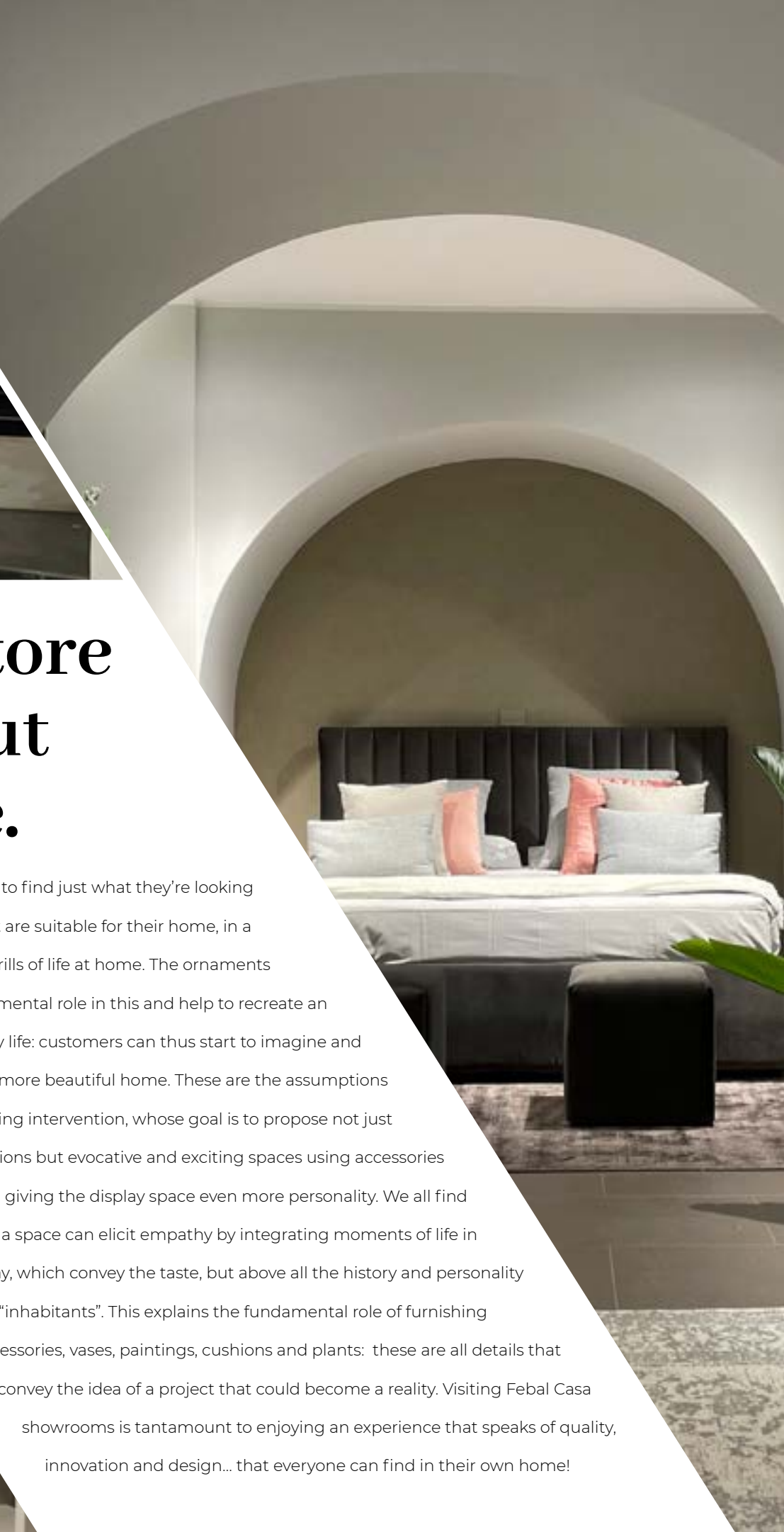
When the room is shared by several siblings, you may decide to opt for overlapping sliding beds. In this case, when they play, they can benefit from a free space in the middle of the room, which is occupied at night by a second and third bed, as in the

example of the Muvi Love structure.

In order to make the most out of the children's bedroom, a winning idea is also to use furniture designed to contain and concurrently accommodate the architecture of the room, such as beds with built-in drawers, bunk beds with storage container steps or exploit the verticality with configurations envisaging the bed with the wardrobe underneath it. Febal Casa's MOMENTS collection is designed to offer all this for smart and clever children's bedrooms where safety comes first and foremost.



Milena Ghirardelli
Visual merchandiser



The concept store is all about home.

Customers enter a showroom expecting to find just what they're looking for: a solution or several solutions that are suitable for their home, in a place designed to generate the thrills of life at home. The ornaments and the outfitting play a fundamental role in this and help to recreate an atmosphere of real, everyday life: customers can thus start to imagine and dream of a different and more beautiful home. These are the assumptions underpinning the styling intervention, whose goal is to propose not just furniture compositions but evocative and exciting spaces using accessories and ornaments, giving the display space even more personality. We all find inspiration if a space can elicit empathy by integrating moments of life in the display, which convey the taste, but above all the history and personality of the "inhabitants". This explains the fundamental role of furnishing accessories, vases, paintings, cushions and plants: these are all details that convey the idea of a project that could become a reality. Visiting Febal Casa showrooms is tantamount to enjoying an experience that speaks of quality, innovation and design... that everyone can find in their own home!

RESPECT

TRANSPORT:

WE ORGANISE SHIPMENTS BY OPTIMISING DELIVERY SPACES AND ROUTES TO REDUCE THE CO₂ FOOTPRINT ON THE PLANET.

PACKAGING:

WE ONLY USE CARTONS MADE FROM RECYCLED PAPER, PROGRESSIVELY REDUCING THE USE OF PLASTIC TO SHIP PRODUCTS.

INTERNAL LOGISTICS:

WE HAVE OPTIMISED ALL THE HANDLING WITHIN THE COMPANY TO MINIMISE THE WASTE OF ENERGY RESOURCES.

GREEN TECHNOLOGIES:

WE CHOOSE 100% NATURAL MATERIALS WHICH ARE RENDERED EXTRAORDINARY BY INNOVATIVE PROCESSES SUCH AS SINTERING TECHNOLOGY THAT ALLOWS THE CREATION OF CERAMIC STONES WITHOUT THE USE OF GLUES AND POLLUTING SUBSTANCES.

CIRCULAR ECONOMY:

WE PRODUCE MELAMINE DOORS AND STRUCTURES MADE OF ECOLOGICAL PANELS SOURCED FROM POST-CONSUMER WOOD, WHICH IS GIVEN A SECOND LEASE ON LIFE BY VIRTUE OF A CIRCULAR ECONOMY THAT FEEDS ITSELF, WITHOUT AFFECTING OUR FOREST HERITAGE.

PRODUCT DURABILITY:

WE DESIGN PRODUCTS WITH A LONGER SERVICE LIFE TO REDUCE WASTE AND DELIVER HIGH QUALITY STANDARDS.

INNOVATION:

WE ARE ALWAYS ON THE LOOK-OUT FOR UNIQUE MATERIALS AND RAW MATERIALS THAT WILL ALLOW US TO OFFER THE MARKET HIGH QUALITY PRODUCTS WITH A DISTINCTIVE DESIGN.

SUSTAINABLE MATERIALS:

WE USE GLASS AND ALUMINIUM WHICH CAN BE RECYCLED ENDLESSLY TO PRODUCE HARD-WEARING PRODUCTS WITH A STRONG STYLE IMPACT, AND PET FOR SAFE SURFACES THAT DO NOT RELEASE ANY TOXIC EMISSIONS DURING THE PRODUCTION AND USE CYCLE.

Our Services



INFORMATION MATERIAL

that is comprehensive and detailed.



TRANSPORT GUARANTEED

with organised shipments optimising delivery spaces and routes.



A DESIGN TEAM

that's trained and ready to help.



CRYSTAL-CLEAR PRICING

and quotes made to measure.



AFTER-SALES SUPPORT

starting at the store itself and extends to the company in person.



SOPHISTICATED SOFTWARE

for graphic design and customised photorealistic simulations.



PROFESSIONAL FITTING

guaranteed by experienced employees.



[febalcasa.com](https://www.febalcasa.com)



**New
in Kitchen**

TRACCIA WITH J-PULL DOOR

The understated appeal of the new model is expressed in the handle grips that, shaped directly on the doors, distinguish the kitchen fronts with elegance.

In both the continuous or the interrupted version, the exclusive "J-Pull" revisits the classic handle with a contemporary twist, giving rise to pure silhouettes and games of light where style and functionality are intertwined.



The fronts with "J-Pull" handle are the distinguishing feature of the model and allow you to create various stylistic combinations.

A composition packed with a powerful narrative structure, which speaks of urban refinement and sophisticated textures provided by the clear vein patterns on the Laminam Pietra piacentina taupe top.

CLASS

Class is the ideal solution for those who love to plan and customise their spaces with style. The classic look of the composition can be alleviated by mixing different shades and choosing the number of framed or smooth doors, enhancing its modern appeal in a perfectly transitional philosophy. The kitchen becomes a fluid form recalling a more understated contemporary style.





**New
in Living
room**



FLOOR-STANDING BOISERIE

The extensive modularity of the boiserie panels now allows you to clad walls entirely all the way to the floor.

The textured alternation of the elements and the luminous signs created by the built-in LED light allow for maximum customisation of compositions.



Diciotto

The luxury of simplicity.

DECK WALL UNIT

For maximum furnishing versatility, Deck is now also available in a vertical version to give momentum and lightness to your living room wall.

The single module makes the perfect element to develop solutions in total freedom.



PAPER WALL UNIT

The new Paper wall unit stands out for its protruding doors that strike an elegant balance between blocks and voids.



Trenta

The bookcase at the heart of the living room.



PLUS GLASS SHELVES

Plus shelves in backlit glass visually lighten the bookcase and lend the setting a contemporary feel.

COVER DOORS

Cover protruding doors are designed to embellish the linearity of the structure and create a strong and elegant sign.

DUAL COLOR LIGHTING

It's a new way to light your home and furniture. This type of lighting, which can be incorporated into the vertical side panels and the Plus shelves of the Trenta bookcase, allows you to choose between a natural light and a warmer light, with the possibility of choosing the degree of intensity in order to create different atmospheres.

New Upholstered products





TRIBECA

Seats and backs with a sinuous shape make Tribeca a sofa packed with personality. Its enveloping shapes are perfect for furnishing both residential and hospitality environments with style and elegance.





CONEY

Coney is the contemporary sofa par excellence. The compositional abacus and the possibility of inserting support and storage elements between the seats make it suitable for accommodating any space and style requirement.

New in the Bedroom



1

WARDROBE WITH SEASONAL DOORS

The solution that allows you to add modules to the wardrobe, convenient both when swapping over your wardrobe at the start of another season as well as to organise everything you use less frequently.



2

GAE CHEST OF DRAWERS

The model originating from the concept of modularity for the development of countless configurations is now also available in the 126.6 cm length.



4



GAE WALL-MOUNTED BEDSIDE TABLE

The bedside table with understated and modern silhouettes, which, in the wall-mounted version, changes the design of the bedroom, ensuring greater usability and a clean-cut look.

5

DESIRE BED

The padded modular headboard which allows you to customise the room according to your particular style and taste.



6



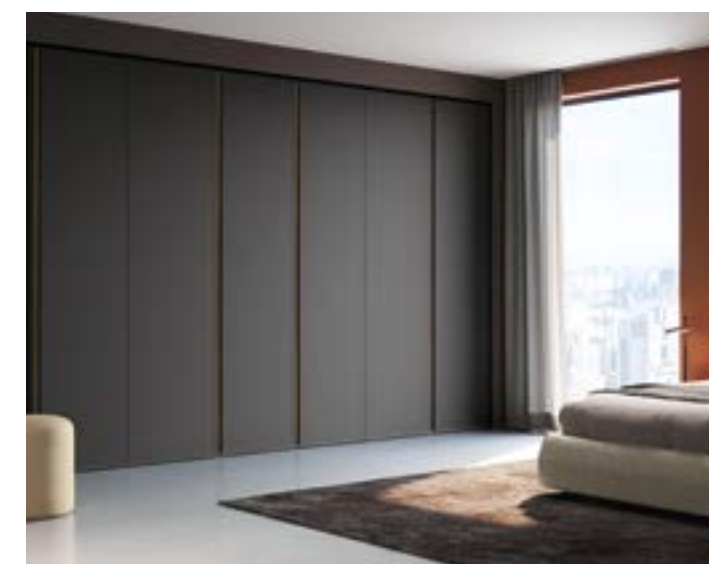
3

WARDROBE FOR PASSAGEWAYS

The possibility of customising the bedroom with a wardrobe above the door makes it possible to achieve a solution that makes use of every centimetre available while mirroring the architecture of the room.



7



LEWITT PLUS HINGED DOOR

The Lewitt hinged door is now available in the plus version with a groove opening along the entire height of the wardrobe, generating a minimal profile and offering maximum ergonomics.

LUMIA HANDLE

Lighting is a constant element in Febal Casa's stylistic research. Interpreted as a sign capable of lending discreet and elegant character, in the slumber area it becomes a decorative and functional element incorporated into the Lumia handle.

New Children's bedroom



Oslo bunk bed



The Oslo bunk bed integrates into the Pepita System perfectly.



Cubes for the boiserie system.



Wardrobe with sloping cut, with niche, oblique cut doors and padded cushion.



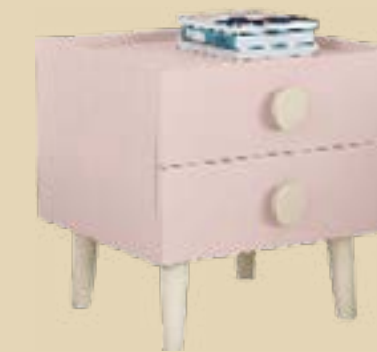
Ponte Rialto with oblique cut doors.



Roof bed with Sigma bed frame.

ACCESSORIES AND COMPONENTS IN SOLID ASH WOOD

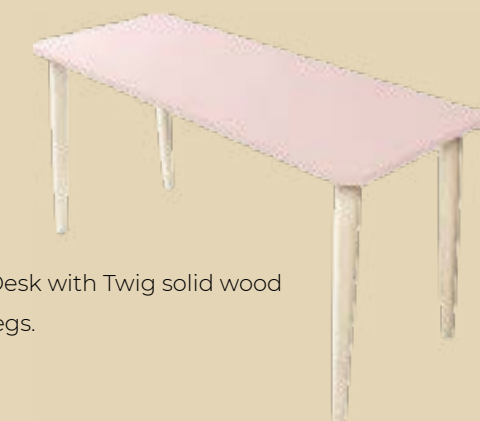
Elements and accessories in solid Ash wood play the starring role of light and luminous atmospheres that underscore the bond with nature, typical of Scandinavian style.



Brick set with Pom handle and Twig foot in solid wood.



The Pom and Dash handles are made of solid Ash wood and can be applied to all the elements in the collection.



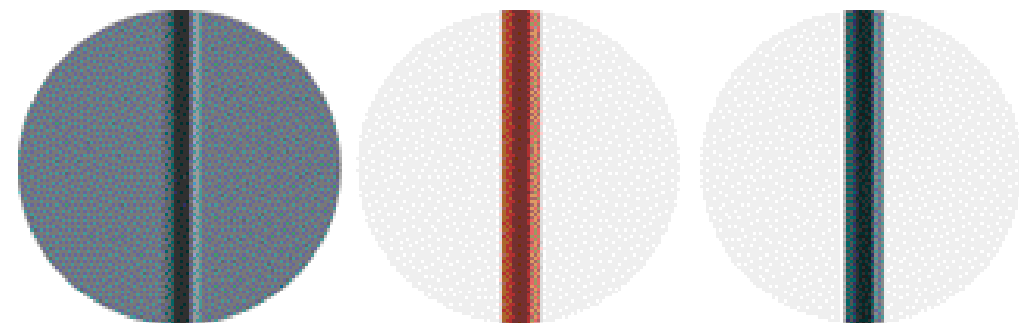
Desk with Twig solid wood legs.

A new style of storage

Full-coloured niches that can be customised in all the finishes in the collection to match the interiors too, creating perfect wardrobes for any mood. The Club groove is available in all the solid colours in the collection.



Club groove.



Wardrobe with niche.



JIB METAL WALL UNITS

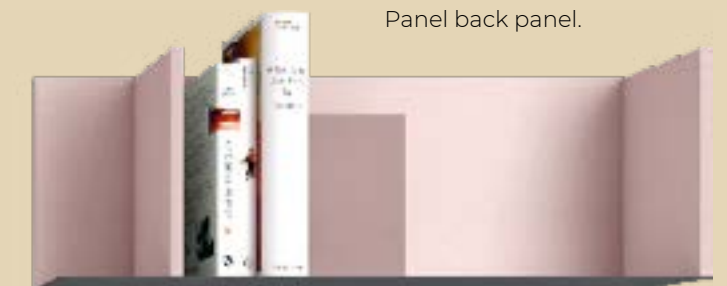
Metal and panel wall unit. You can create unique compositions by bringing together or swivelling the various elements.



The back panel can be customised with a finish that is either tone-on-tone or in contrast with the partitions.



Panel back panel.



Sheet metal.





**CUC
INA.**

**COL
LEC
TION**

22/23



OVER STRUCTURE

A new structure with 78 cm high doors combined with the 8 cm high plinth that guarantees more storage, enhancing the style of the kitchen. The 63 cm deep top makes the operational area extremely functional.

DAILY OPEN UNITS

The Daily open units have shelves fitted with metallic edges in champagne, nero and alluminio anodizzato. The 59 cm deep tall unit version comes standard with 2 drawers in door finish, vertical and bilateral LED lights.



CHOPPING BASE UNIT

The Chopping base unit incorporates several functions: from a single drawer, you can pull out the fold-out chopping board, access the removable cutlery tray and insert a side storage accessory if necessary.



SKY UNDER-WALL UNIT BAR

The Sky aluminium under-wall unit bar is available in two finishes, Nero and Satinato, and can be equipped with a variety of accessories.



DISHWASHER DOOR WITH BASKETS

For the Over structure, the dishwasher door is available with two basket-height fronts and an intermediate groove, for the utmost matching styling of the base units.

Cucina.

Product strengths

The CUCINA. collection brings to mind a space made up of unique elements, high-tech details and innovative solutions where planning design evolves and develops without limits. Culinary experience comes together with experimentation with the help of accessories that can be customised to suit various needs and are essential to organising and giving rise to functional configurations that don't compromise on style.



ECLETTICA HANDLE

The Eclettica handle stands out for its elegant and minimal design; it is available both in the smooth and knurled finish with three different supports: open foot, closed foot and knob.

MODULAR PLUS ELEMENTS

Modular is a line of accessories designed to enhance the functionality of the kitchen workstation thanks to an equipped wall panel fitted with aluminium under-wall unit elements, equipped with easily repositionable accessories. In the Plus version they have LED lighting as standard: a functional alternative to normal shelves.



OMNIA BOISERIE

The system with boiserie allows you to organise all the vertical spaces in your kitchen in an effective and scenic way, thanks to shelves and accessories that are incorporated into the structure, striking the perfect balance between functionality and elegance. Available in 3 different colours better to match all the finishes in the range.

BLOCK WASTE BIN

The Block pull-out waste bin offers a large storage capacity, as it fits in the doors with a pull-out structure in the 30, 45 or 60 cm width.



HORIZON TOPS

Horizon tops allow the upper top to slide and reveal the cooking area and create - only when necessary - a practical snack top. They are available in two solutions, sliding parallel to or across from the length of the island, in all the Unicolor and Fenix laminates in the range.

Class model

Designed by Andrea Federici



The concept of this model features the framed door as its undisputed protagonist. Its personality, ability to reflect light and offer depth portray a classic style that can be elegantly combined with matt lacquers and groove openings, bridge handles and industrial-style knobs for a truly sophisticated and chic result.



Find out more



Traccia model

Designed by Andrea Federici



The Traccia collection is a signature of style, the perfect merger of class, versatility and elegance. Attention to detail, restyled evergreen lines and new experiments craft unique compositions which interpret every personality to become the ideal scenario of our days.



Find out more



Ego model

Designed by Arch. Paolo Colombo



Ego is a kitchen that focuses on elemental shape, placing the emphasis on all the accessories that enrich it. Handles, peninsulas and storage elements play an impressive role, standing out like precious gems.



Find out more



Ego Line model

Designed by Arch. Paolo Colombo



Ego Line in a comfortable and elegant atmosphere, takes to the stage with an intriguing contrast between the classical language of architecture and the modernity of the model. The past is intertwined with the present thanks to the use of the Calacatta silk Neolith®. The colour contrast is emphasised between base units, wall units and tall units in Grigio Efeso Fenix laminate, punctuated by contrasting grooves in matt Nero aluminium.



Find out more



Charme37 model

Designed by Arch. Paolo Colombo



Charme37 constitutes a dynamic kitchen model that also opens up to welcoming living rooms. Its design is rational and minimalist, featuring a flat groove and a door with 37° slanted processing.



Find out more



Era model

Designed by Arch. Paolo Colombo



The Era handle is the feature that distinguishes the design of this system: a thin line with an ergonomic increase in cross-section is placed in front of the groove handle grip, for an excellent functional result.



Find out more



Kaleidos model

Designed by Arch. Paolo Colombo



Find out more

Kaleidos expresses the concept of living with flexibility, proposing doors made with an aluminium frame that offers a multitude of customisation possibilities, thanks to the numerous finishes of the materials in the range such as coloured glass, solid laminates and stoneware surfaces.

Modula Overmodel

Designed by Studio Ferriani



Find out more

A new structure with 78 cm high doors combined with the 8 cm high plinth that guarantees more storage, enhancing the style of the kitchen. The circular snack top offers a highly effective stylistic feature. The tops and the backsplash in Laminam® Noir Desir Stoneware play the starring role, while the knurled finish of the Eclettica handle and the brass accessories lend the setting the utmost elegance.

Modula Line Overmodel

Designed by Studio Ferriani



Find out more

A new structure with 78 cm high doors combined with the 8 cm high plinth that guarantees more storage, enhancing the style of the kitchen. The Tower block looks like a volume that has been added to the base units of the island or of the linear composition. By being raised above the worktop, it creates a functional area with a strong style. The handle-free opening with a groove system outlines a modern design.

Modula Line model

Designed by Studio Ferriani



Find out more

This composition has an enveloping structure that combines functionality with style. Delicate and light finishes such as Crigio seta PET, Noce bianco and Marmo Calacatta grigio finish. Matching furniture solutions thanks to the Total Living concept: the Trenta full-height partition bookcase is made in the same finish as the wall units.

Modula model

Designed by Studio Ferriani



Find out more

A linear layout for a kitchen that's devoted to functionality, where the open units are designed to integrate with one another and match the composition finishes. The doors of the Cubo cabinet have the characteristic of retracting into the sides of the structure, leaving the storage space and the removable stainless steel top free and completely accessible.

Chantal model

Designed by Arch. Alfredo Zengiaro



Find out more

In its design, the horizontal and vertical arrangement determines compositional solutions and sophisticated design possibilities: Chantal is a model where material and colour can be exploited to the full to underline shapes and volumes according to a very personal style.

Aria model

Designed by Studio Ferriani



This contemporary model is distinguished by the opening of the doors with a handle on the top of the door, which conveys the minimal style of the models with a groove. Embellished by its palette of prized materials, designed with painstaking care for detail, Aria is simplicity and modernity with a little inspiration drawn from nature.



Find out more



Memory model

Designed by Dario Poles



Find out more

Memory is the perfect interpretation of the return to more traditional style which is characterising contemporary design. Its frame door can be combined with "smooth" doors and is available in various styles, fully expressing the timeless look of this kitchen.

Romantica model

Designed by Arch. Alfredo Zengiaro



Find out more

The soul of this model is classical, but at the same time technological. Romantica comes to life with simple silhouettes that recall a neoclassical era, but it does not compromise on the practical needs of contemporary everyday life.

Gala model

Design Dario Poles and Arch. Alfredo Zengiaro



Find out more

Gala is a contemporary classic, a furnishing system that can adapt to the most diverse home architectures. The model embraces the concept of flexibility by proposing numerous elements which can supplement the typical frame door to characterise each project in a more traditional or more on-trend direction.

**GIO
RNO.
COL
LEC
TION**



22/23



LIGHT ELEMENT

To emphasise the compositional rhythm and the geometries of living room solutions, the light element is the stylistic gesture that goes beyond the decorative function.

GIORNO HANDLE TO MATCH THE KITCHEN

The groove handle was designed to match the Aria kitchen in pure Febal House Total Living style.



TV CABINET

In order to enjoy watching TV without compromising on functionality, the TV cabinet is available in various solutions to accommodate all needs.



Giorno.

Product strengths

The GIORNO. collection offers design solutions to furnish the living room, proposing a series of elements and details that will make your home unique. Must-have details capable of creating a functional environment with strong style impact around which your household's sociability can revolve. Find out more all the opportunities available, our interior designers look forward to helping you in store to show you everything you need to make your living room the most appealing and welcoming place in your home.



TRAY TOP

The living room base units can include the tray top in which the bottom tray panel can be customised in a tone-on-tone or contrasting finish and enhanced with built-in lighting.

SLIDING DOOR APPLIED TO THE BOOKCASE

The use of dynamic elements such as sliding doors makes it possible to vary the structure of the living room according to your needs.



DESK TOP

The Trenta system envisages the insertion of the desk top, extending the functions of the bookcase to the flexibility of the environments and creating a home office that optimises space.



OVERHEAD COMPARTMENT

The bookcase can translate into a genuine partition for rooms. The overhead compartment grants access to and from spaces, making the open space appear lighter.



SYSTEM
DICIOTTO

Art Direction Arch. Paolo Colombo



Find out more

Practical, versatile, functional, and stylish too. Diciotto is Febal Casa's living room collection affording extensive modularity to create a wide array of different compositions, all the better to interpret individual lifestyles.



The boiserie is designed as a system capable of communicating with all the other furniture in the Febal Casa range, a versatile element that fits in with the Giorno collection with continuity. The Boiserie consists of customisable overlapping panels with built-in LED light, contrasting finishes, metal shelves, wall units and bottle-rack modules.



The floor-standing and wall-mounted base units play with the colour contrast, enhancing the horizontal development of the composition and its light weight.





Diciotto composition with wall-mounted base units in Caffè matt lacquered finish and Odeon floor-standing unit in Noce melamine. Wall units with Grigio seta matt lacquered structure, Noce melamine back panels and doors in Grigio seta matt lacquered finish and Noce melamine.



Diciotto composition with wall-mounted base units, structure and flap doors in Cemento masdar melamine. Grigio antracite matt lacquered top. The wall units in different depths alternate the Grigio antracite lacquered finish with Cemento masdar melamine to create a beguiling dynamic look. The Deck wall units with structure in Carbon grey and back panels in Cemento masdar melamine give the composition impetus and lightness.



SYSTEM
QUARANTACINQUE

Art Direction Arch. Paolo Colombo



Find out more

A modular system dedicated to sociability: compositions with pure silhouettes that showcase a modern and elegant craftsmanship thanks to the slanted processing on the units that characterise this collection.



The Quarantacinque system is defined by a 45° chamfered processing on the door and structure, creating a perfect volume.
The handle on the wall units and base units generates an ergonomic cut on the structure, embellishing the product to create a refined detail.



The Daylight wall unit defined by a 45° processing perfectly mimics the shapes of the base units and wall units of the system. Available in veneered and matt lacquered finish, it can be embellished with a plate glass element and LED lighting.



TV cabinet solutions

Art Direction Arch. Paolo Colombo



Mobile solutions, concealed elements or genuine backdrops?
There are myriad systems to incorporate your TV set into your wall. Setting up the living room without forgetting its functions is essential to avoid forgetting the practical aspect, even in a prestigious setting.

A TV supporting element, a swivel TV panel and a TV portal are just a few possibilities. Built-in lighting, cable grommets and concealed shelves are additional options to make any structure even more functional.



SYSTEM TRENDA

Art Direction Arch. Paolo Colombo



Find out more

Trenta is the bookcase interpreted by Febal Casa as a key element around which the living area is designed. The functional heart of everyday life which, thanks to infinite design possibilities, meets a host of different space and style requirements.



The modularity of this GIORNO system allows the creation of customised structures capable of accommodating any style and functional requirement.



**SOF
AS.
COL
LEC
TION**



22/23



CONTRASTING DETAILS

The sofa seams can be ordered tone-on-tone for a traditional style or contrasting to create highly distinctive games of colour.

MOTOR-DRIVEN PENINSULA

The motor-driven peninsula is designed to satisfy all relaxation needs thanks to the possibility of reclining the backrest and footrest with a convenient remote control.



EXCLUSIVE DESIGNS

One example is the quilting with vertical slats that characterise the Madison model, the result of partnerships with nationally renowned architecture studios.



REMOVABLE COVERS

The upholstery covers on the models in the collection are designed to be completely or partially removable, so that they can be washed easily.



MODULAR SOFAS

The extensive choice offered by the SOFAS. collection allows customers to create the composition that most suits them and satisfy a multitude of style and furnishing requirements.

Sofas.

Product strengths

The SOFAS. collection includes a wide range of sofa models that can make the rooms unique thanks to their tailored design and timeless elegance. The sofa - the symbol of sociability and sharing - is the undisputed star of the living room and should therefore provide the perfect combination of comfort and style. This page illustrates some of the strengths of the collection; visit our website or one of our stores to see them all.



CHAISE LONGUE

To customise the sofa to achieve ultimate levels of relaxation, the chaise longue is a must-have. This feature will turn your sofa into the veritable star of the sitting room.

CERTIFIED PADDING

To guarantee the elasticity of the padding over time, we only use pure polyurethane. What's more, all our padding is certified Certi Pur to ensure comfortable and enveloping seating.



PULL-OUT POUF

Thanks to a discreet fabric handle, the pouf can be pulled out to become a comfortable bed to accommodate friends and family.

CURVED AND TRAPEZOIDAL ELEMENT

These two accessories are designed to leave room for original and unprecedented combinations. The trapezoidal pouf can also be used as an independent piece of furniture.



3-POSITION SLIDING SEAT

The seat sliding system, with double density padding, guarantees superior standards of comfort and usability.



MADISON

An extremely versatile seating system, both from the compositional point of view and in the choice and combination of materials available. A contemporary modular sofa with a strong style impact, made to combine the geometric design of the structure with the softness of the seat and backrests.



FILLMORE

Fillmore is a modular sofa with a stern yet multifarious personality, designed to fit in with style and measured elegance in any setting.



Ergonomics, comfort and customisation are essential factors in order to complete your living room. Coffee tables and poufs underline a choice of style that matches the rest of the furniture dedicated to sociability and relaxation.



MAYFAIR

Soft padding, comfortable seating and tailored finishes characterise every detail with a style that strikes the perfect balance between classic stylistic elements and contemporary design. The wide choice of upholstery covers and modular elements available to Mayfair also allows it to satisfy multiple furnishing requirements.



Find out more

LES HALLES

Among the sofa models available, Les Halles plays a leading role, thanks to its strong personality, defined by impressive volumes and comfortable padding.





CONEY

Characterising a setting by making it functional to your needs and desires is the first goal of Coney.

Comfort, style and practicality are the prerogatives of the model, now the genuine star of the living area thanks to the possibility of including coffee tables between the sofa modules.



SOFAS.

Comfortable and enveloping silhouettes are used in all the models in the SOFAS. collection, which includes several modules able to offer maximum compositional freedom. Febal Casa sofas are destined to become the stars of the living room thanks to their tailored design generated by the expert craftsmanship consolidated over more than 60 years of tradition.



TRIBECA

Tribeca is a sofa with a stern yet multifarious personality, designed to fit in with style and measured elegance in any setting. The structure welcomes and protects thanks to shapes and materials designed to ensure a genuine experience of relaxation and well-being.





**NOT
T'E.
COOL
LEC
TION**

22/23



PLUS SHELVES

Plus shelves with Carbon grey frame and Trasparente glass can be ordered with optional internal LED backlighting that enhances the materials. Interaction is controlled by a sensor, remote control or Bluetooth application to adjust the light intensity.

WARDROBE WITH TV COMPARTMENT

The TV compartment is available in the fixed or opening version and can be swivelled to the left or right. It is also equipped with a housing for electronic devices and a cable grommet set-up.



SAFE COMPARTMENT

The safe compartment is a must-have inside the wardrobe in order to protect your valuables. Thanks to a practical flap, it can be hidden away from view.



PULL-OUT LAUNDRY BASKET AND SHOE RACK FRAME

The pull-out frame offers neat and tidy storage inside the wardrobe and can be configured with various solutions designed to organise and keep everything in order.



Notte.

Product strengths

The NOTTE. collection outlines a stylish and sophisticated lifestyle. The solutions for everyday life propose a new concept of comfort that combines style with practicality. An extensive selection of accessories to be combined with the wide modularity of furnishings guarantees ample scope for customisation linked to the organisation of space. Be inspired by our ideas and make your dream bedroom come true.

CONSOLE WARDROBE

The walk-in wardrobe has been restyled to be utilised at various times of the day: the console in fact houses a multi-purpose top which can turn into a convenient make-up area or a practical smart working station.



WATCH WINDER

The storage cubby holes can be customised with infinite solutions such as the watch winder which, with unmistakable style, allows you to display and store your collection of watches.



WARDROBE WITH NICHE

The wardrobe with niche allows you to develop solutions capable of solving all individual and space requirements. Customisable with shelves and finishes that are tone-on-tone or in contrast for multiple uses.

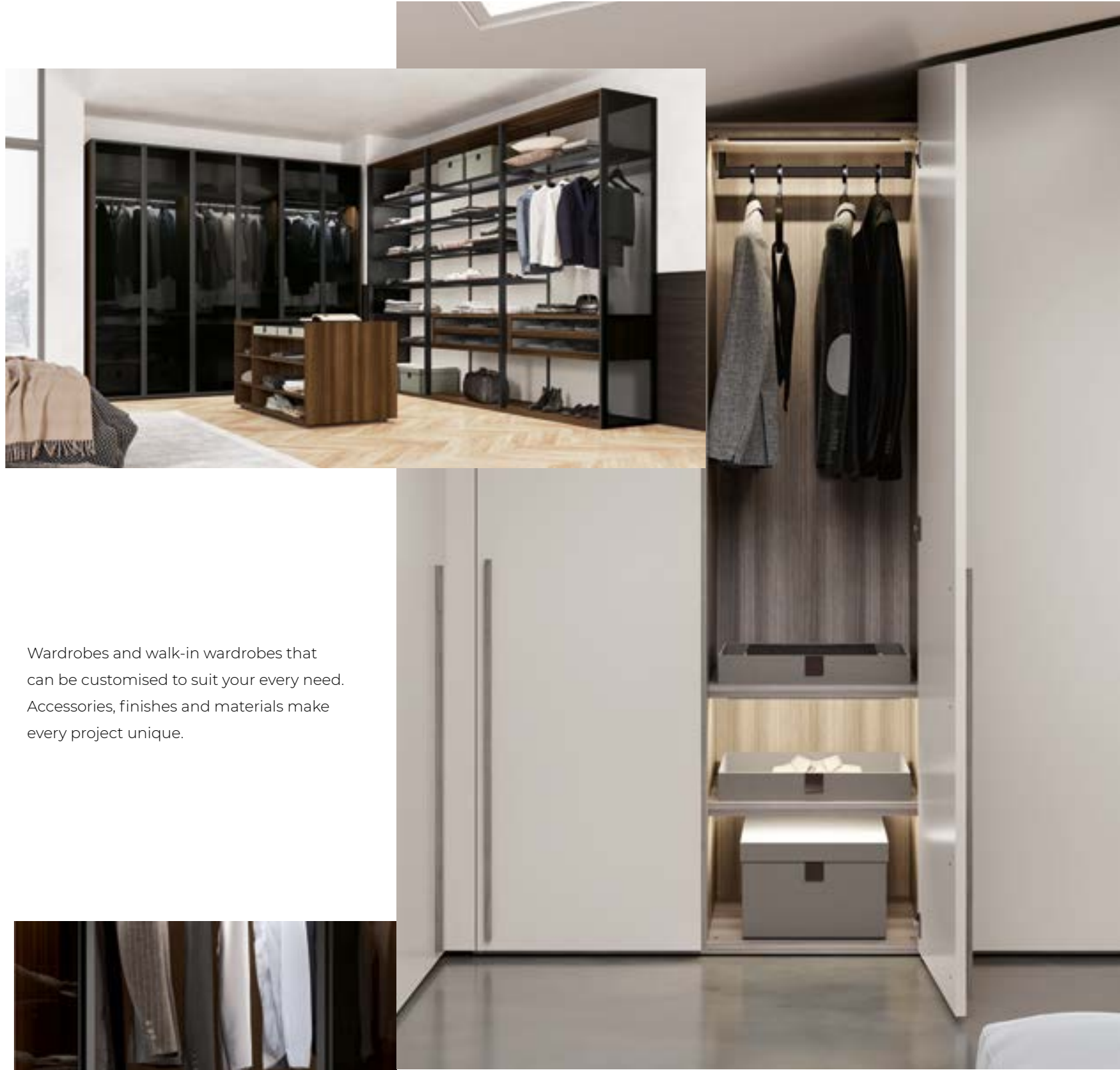


PULL-OUT TROUSER RACK AND SKIRT RACK FRAME

The pull-out trouser rack frame can optimise the space inside your wardrobe without forgetting the importance of caring for our garments.







Wardrobes and walk-in wardrobes that can be customised to suit your every need. Accessories, finishes and materials make every project unique.

Find out more



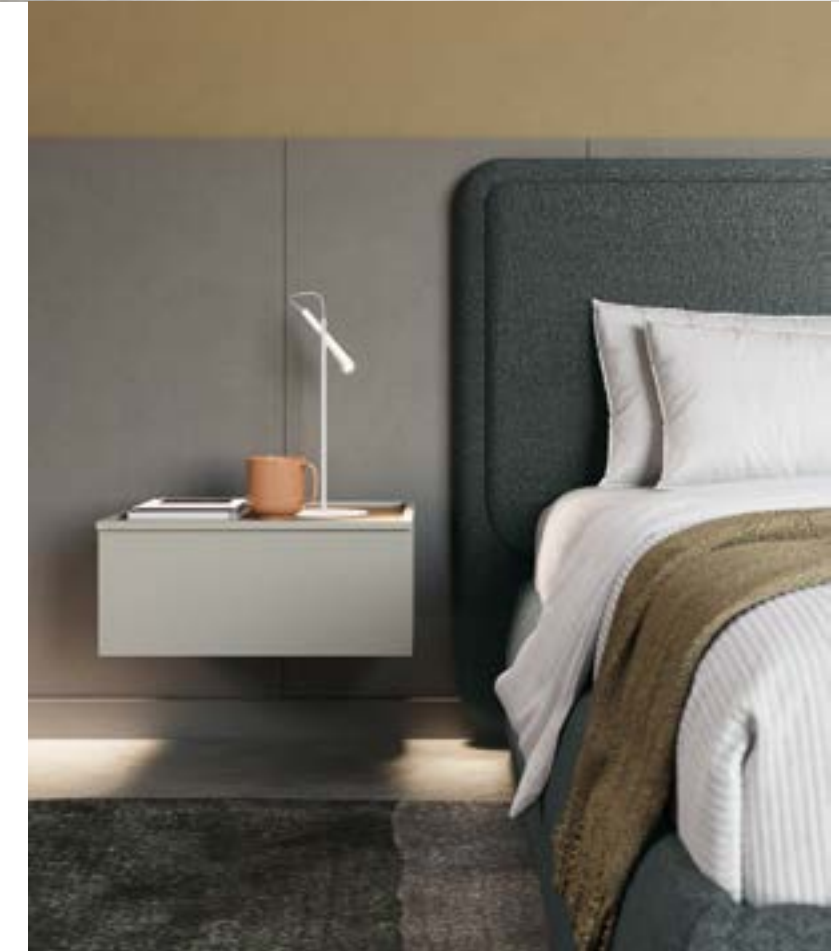
The sophisticated and contemporary Lisboa model is available in both the panel headboard version in standard melamine finishes, and the padded headboard version. The Gate bedroom set, which is unique in style and practicality, combines the opening of the upper side grip with the lower push pull opening framed by the metal profile.



TV compartment to be built into the bedroom wardrobe so you can watch your favourite series comfortably.



The linear design and generous padding characterise the headboard of the Opus bed. Alternating round corners, seams and thicknesses impress this bed with a tailored and refined appeal.



The home must provide its inhabitants with the possibility of setting aside corners for some important me-time: the Gala console allows the creation of a strictly personal space. This item of furniture consists of a pair of drawers and a central module equipped with an opening door with a mirror and built-in LED lighting. Its interior is finished in Leather grey melamine.



The Square free-standing chest of drawers is designed to be the focus point of a walk-in wardrobe, which is why it grants access to the compartments from either side. Its shelf is in Stoneware, the front is in fumè glass and its pull-out boxes are in fabric.



Sliding door wardrobe with Aurora doors in Carbon grey metal and Ombra fumé glass. Interior in Eucalipto argento melamine and Seta argento melamine back panels. Plus shelves in Carbon grey metal and Trasparente glass with built-in LED lighting.



Halley sliding door, in Grigio antracite matt lacquered finish and Eucalipto melamine, embellished in style by the light inserted in the frame that creates a glow on the wood grain, enhancing its texture and elegance.





MOM ENTI. COL LEC TION

22/23



EXTRA THICK ELEMENTS

Extra thick tops, base units, side panels and back panels customise the children's bedroom furniture in a modern and trendy style.

WARDROBE INTERIOR IN CUSTOMISABLE FINISHES

The interior and chests of drawers in the wardrobes can be customised to your liking with a tone-on-tone or contrasting colour.



WARDROBES WITH SLOPING CUT

The wardrobes with sloping cut are designed to achieve maximum storage space even in the most architecturally challenging places.



FOLDING DOOR

Folding doors open and fold over themselves like an accordion. They are ideal for overhead wardrobes as they don't create bulk or get in the way.



WARDROBES WITH DOORS PROTRUDING AT THE TOP

Useful for exploiting every available centimetre, they create storage space where you would never have thought possible.

Momenti.

Product strengths

The MOMENTI. collection comprises solutions to allow children to grow up safely and in style. We know that there's never enough space in children's bedrooms, so we've designed colourful, playful configurations that optimise and store everything so it is neat and tidy at all times. Some examples are the multi-functional furnishing accessories, accessories and design elements; visit our stores to find out more.

PLUS CLOTHES RAIL

As an alternative to the standard version, the plus clothes rail in Carbon Grey allows you to hang your clothes with style and sophistication.

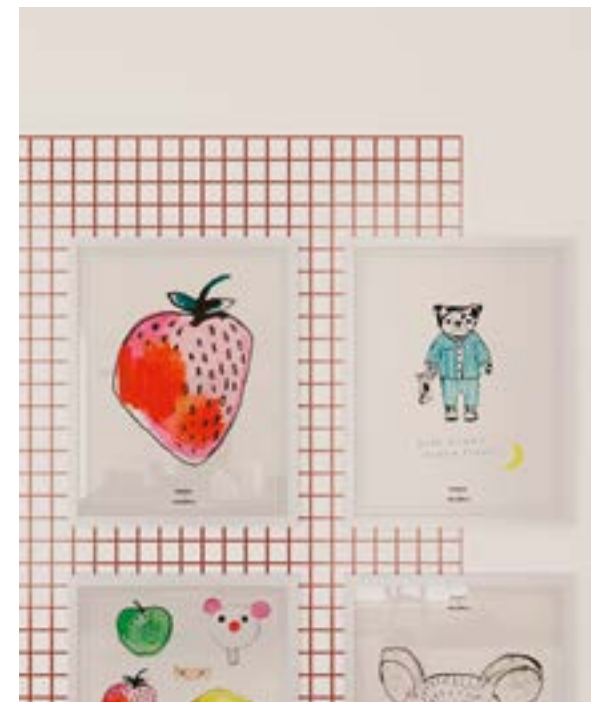


FURNITURE THAT RESPECTS THE ARCHITECTURE OF THE ROOM

Solutions that allow you to have all the space necessary to arrange everything, respecting the architecture of the room and optimising the available surfaces.

COLLECTION OF STICKERS

Wall stickers to decorate the room at your leisure, making the ideal place to grow up, study and relax.



WARDROBES WITH BUILT-IN LIGHTING

The storage capacity of our wardrobes is enhanced by the built-in LED lighting that casts a soft glow and makes even the most hidden spaces visible.



COLLECTION
**CHILDREN'S
BEDROOMS**



Find out more



The children's bedrooms in the MOMENTI collection are distinguished by innovative and playful elements designed to make every space functional without compromising on quality and safety. Furnishing compositions with a strong style impact, devised best to optimise the setting with creativity.

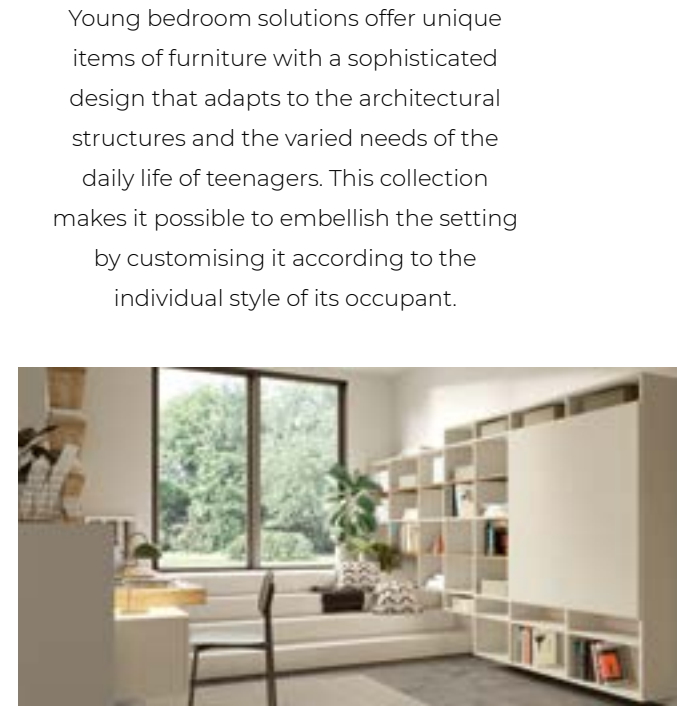




COLLECTION
YOUNG



Find out more



Young bedroom solutions offer unique items of furniture with a sophisticated design that adapts to the architectural structures and the varied needs of the daily life of teenagers. This collection makes it possible to embellish the setting by customising it according to the individual style of its occupant.

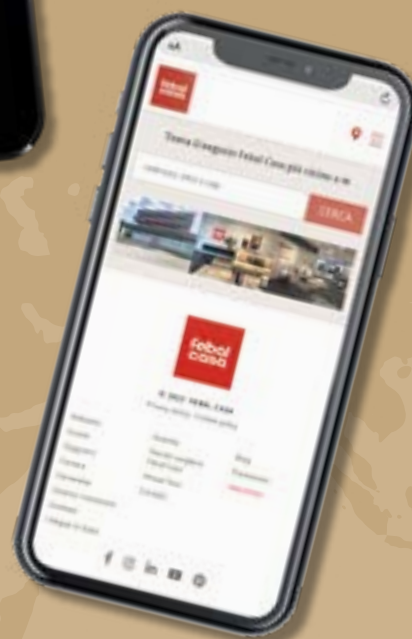
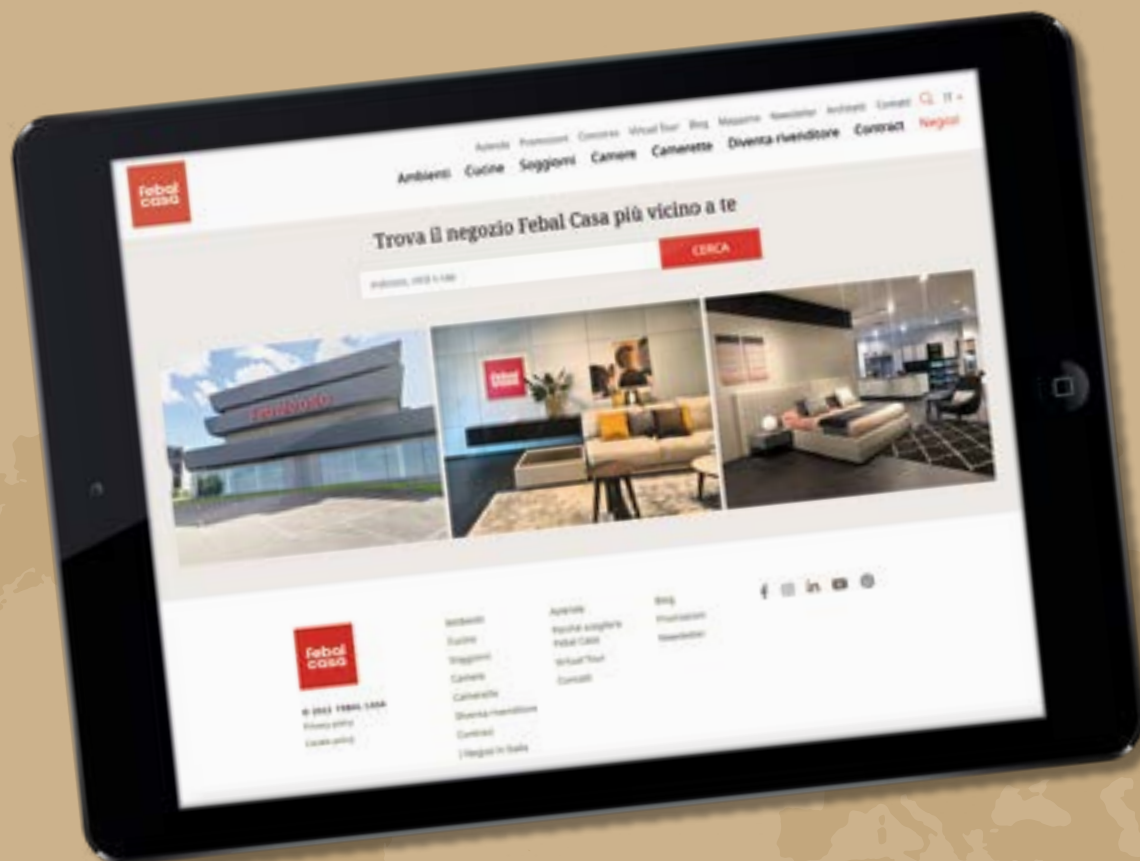




CUCINA. GIORNO. NOTTE.
FEBALCASA.COM

febal
casa

Scan the QR code and discover the Febal Casa store closest to you.





febalcasa.com